

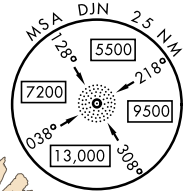
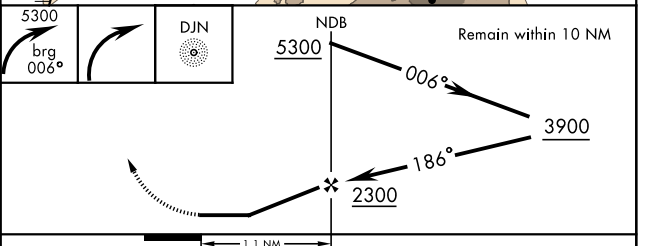
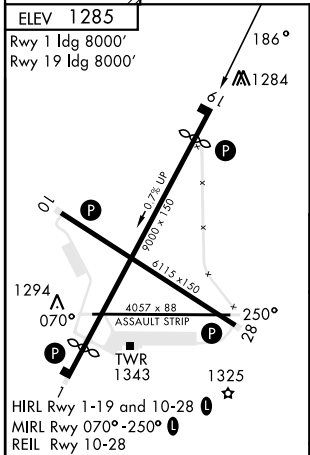
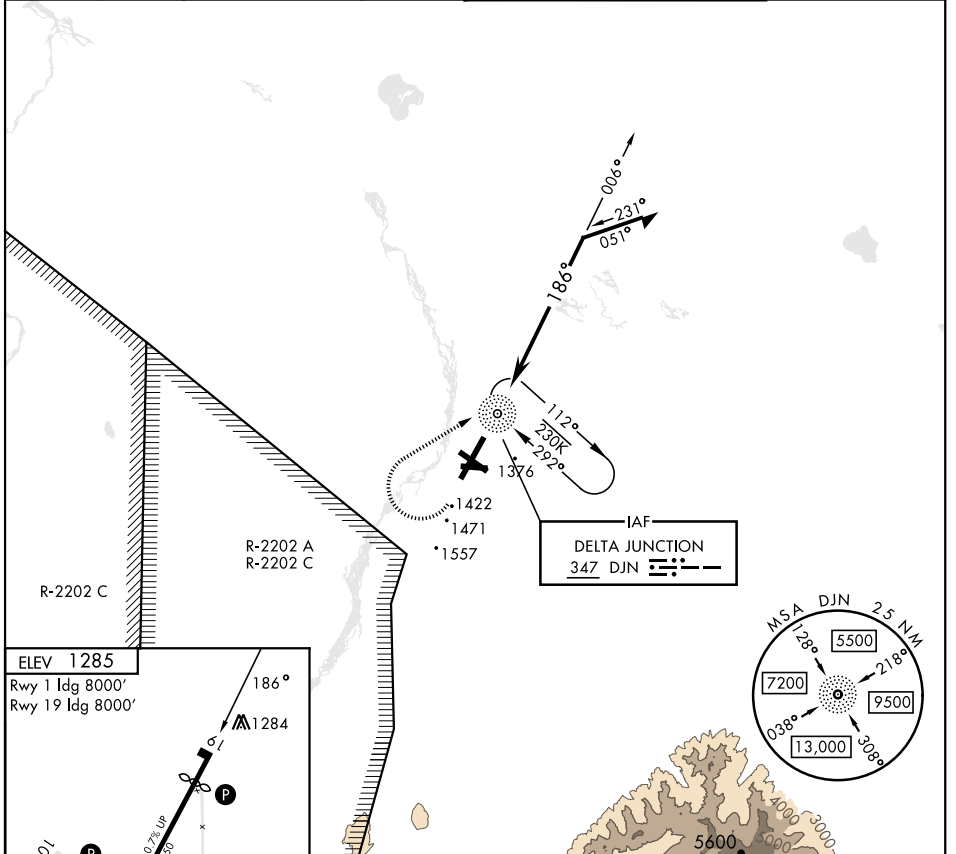
NDB DJN 347	APCH CRS 186°	Rwy ldg TDZE Arprt Elev	N/A N/A 1285	AL-1218 [USA]	ALLEN AAF (PABI)
-----------------------	-------------------------	----------------------------	---	---------------	------------------

RNAV or RADAR required.

* Circling not authorized East of Rwy 1-19.

MISSED APPROACH: Climbing right turn to 5300 via 006° bearing from DJN NDB, then right turn direct DJN NDB and hold.

ATIS 132.075	ASOS 135.65	ANCHORAGE CENTER 135.3 322.5	CTAF 122.9	TOWER ★ 119.8 235.775 40.8 (E) FM	GND CON 118.225 251.05
------------------------	-----------------------	--	----------------------	---	----------------------------------



FAF to MAP 1.1 NM					CATEGORY	A	B	C	D
Knots	60	90	120	150	180	1880-1	595 (600-1)	1880-1½ 595 (600-1½)	2040-2½ 755 (800-2½)
Min:Sec	1:06	0:44	0:33	0:26	0:22	<input checked="" type="checkbox"/> CIRCLING*			

DELTA JUNCTION/FORT GREELY, ALASKA 64°00'N-145°43'W ALLEN AAF (PABI)

Amtd 3 10AUG23

AK, 16 MAY 2024 to 11 JUL 2024

AK, 16 MAY 2024 to 11 JUL 2024