

RNAV (GPS) RWY 10

APCH CRS 101°	Rwy Idg 6115
	TDZE 1253
	Arpt Elev 1285

AL-1218 [USA]

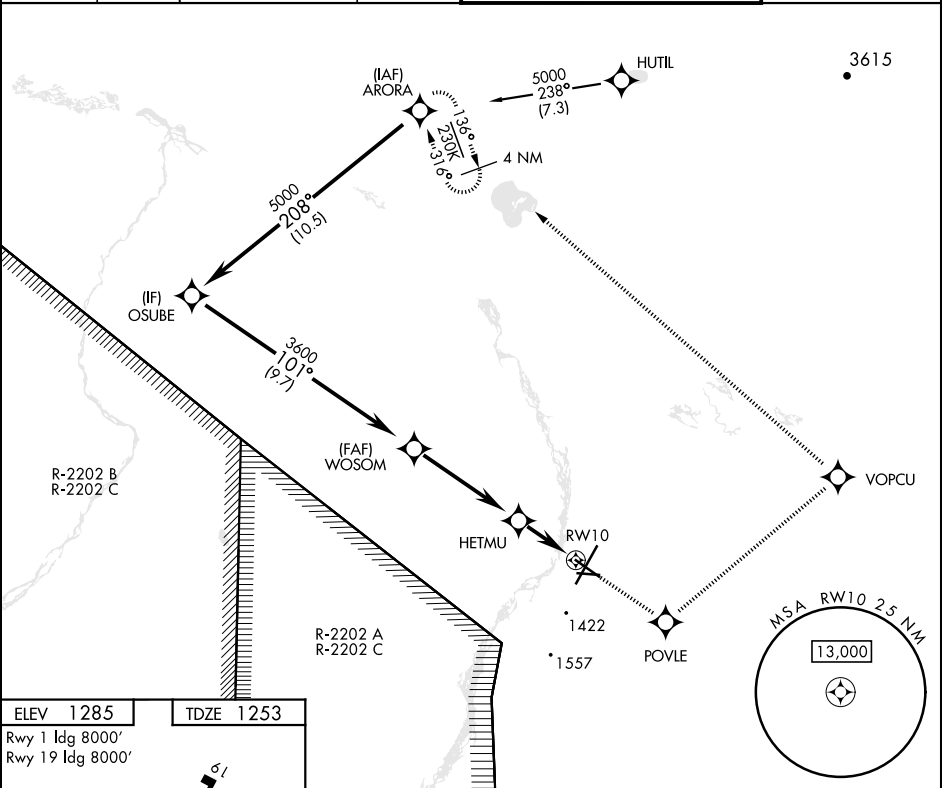
ALLEN AAF (PABI)

RNP APCH-GPS

▼ * Circling not authorized East of Rwy 1-19.

MISSED APPROACH: Climb to 5000 direct POVLE, and via 027° track to VOPCU, left turn via 289° track to ARORA and hold.

ATIS 132.075	ASOS 135.65	ANCHORAGE CENTER 135.3 322.5	CTAF 122.9 0	TOWER * 119.8 235.775 40.8 (E) FM	GND CON 118.225 251.05
------------------------	-----------------------	--	------------------------	---	----------------------------------

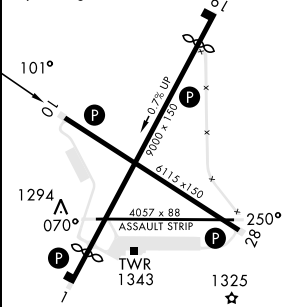


AK, 16 MAY 2024 to 11 JUL 2024

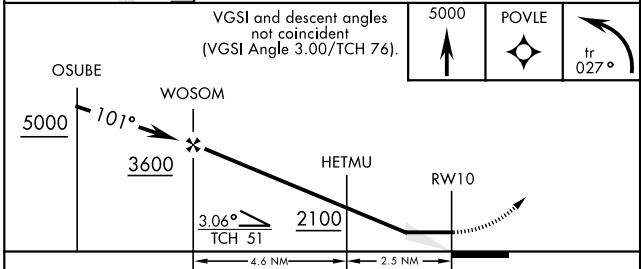
AK, 16 MAY 2024 to 11 JUL 2024

ELEV 1285	TDZE 1253
------------------	------------------

Rwy 1 Idg 8000'
Rwy 19 Idg 8000'



HIRL Rwy 1-19 and 10-28
MIRL Rwy 070°-250°
REIL Rwy 10-28



VGSI and descent angles not coincident (VGSI Angle 3.00/TCH 76).

5000	POVLE	tr 027°
------	-------	---------

CATEGORY	A	B	C	D
LNAV MDA	1640-1	387 (400-1)	1640-1½	387 (400-1½)
CIRCLING*	1740-1	1780-1	1860-1½	2040-2½
	455 (500-1)	495 (500-1)	575 (600-1½)	755 (800-2½)

RNAV (GPS) RWY 10