

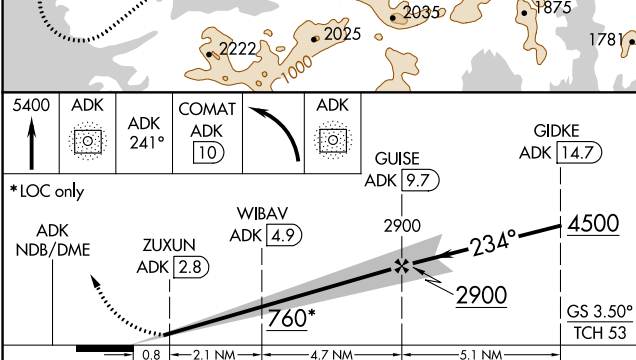
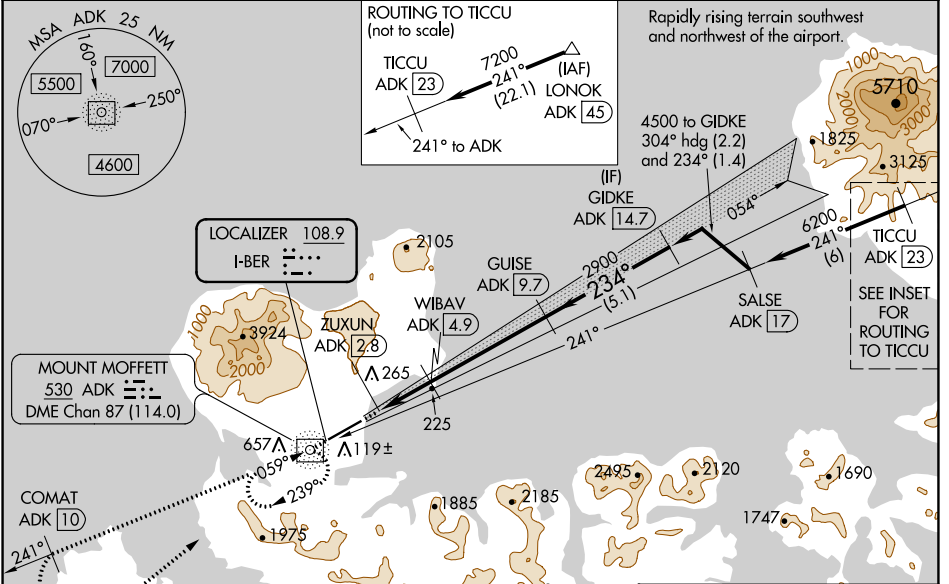
LOC I-BER	APP CRS	Rwy ldg	<b>6190</b>
<b>108.9</b>	<b>234°</b>	TDZE	<b>18</b>
		Apt Elev	<b>20</b>

# ILS Z or LOC Z RWY 23

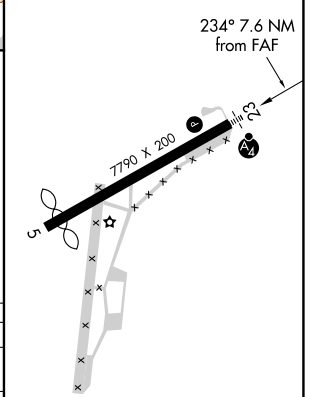
ADAK (ADK) (PADK)

ADF and DME required.	MALS	MISSED APPROACH: Climb to 5400 direct ADK NDB/DME and on the 241° bearing from ADK NDB/DME to COMAT/ADK 10 DME and left turn direct ADK NDB/DME and hold. Missed approach requires minimum climb of 409 feet per NM to 2700; if unable to meet climb gradient, see ILS Y or LOC Y RWY 23.
Circling NA at night. Circling NA northwest of Rwy 5-23. Rwy 23 helicopter visibility reduction below 3/4 SM NA. DME from ADK NDB. Simultaneous reception of I-BER and ADK DME required. Cat E for USAF/USN use only.		

AWOS-3P <b>134.5</b>	ANCHORAGE CENTER <b>126.4 254.3</b>	CTAF <b>122.9 0</b>
-------------------------	--	------------------------



ELEV 20	D TDZE 18
---------	-----------



CATEGORY	A	B	C	D	E
S-ILS 23	309/50 291 (300-1)				
S-LOC 23	480/55	462 (500-1)	480-1 3/8 462 (500-1 3/8)		
CIRCLING	720-1	700 (700-1)	1060-3	2400-3	2440-3
			1040 (1100-3)	2380 (2400-3)	2420 (2500-3)

REIL Rwy 23

HIRL Rwy 5-23

AK, 16 MAY 2024 to 11 JUL 2024

AK, 16 MAY 2024 to 11 JUL 2024