

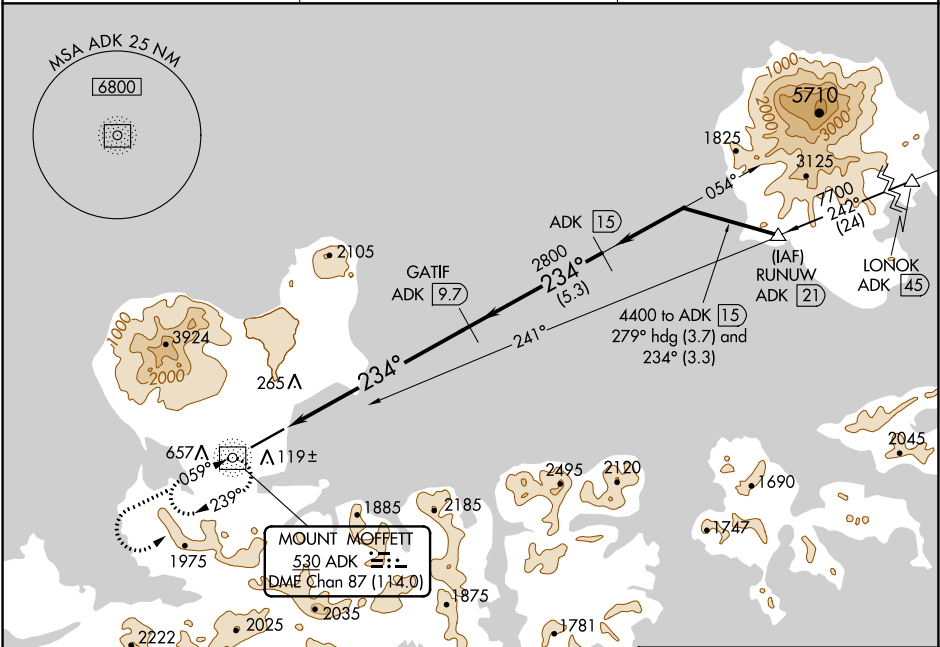
NDB/DME ADK 530	APP CRS 234°	Rwy ldg TDZE Apt Elev	6190 17 20
Chan 87 (114.0)			

NDB/DME RWY 23

ADAK (ADK)(PADK)

	Circling not authorized at night. Circling NA northwest of Rwy 5-23.	MALS 	MISSED APPROACH: Climb to 5000 via direct ADK NDB/DME and ADK NDB/DME 234° bearing, then climbing left turn to 9000 direct ADK NDB/DME and hold.

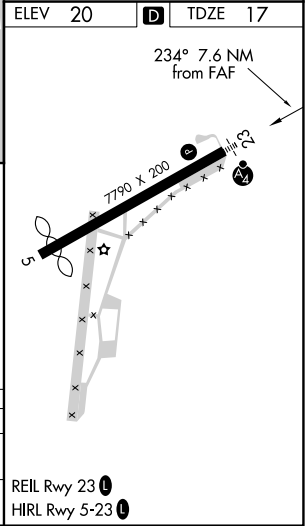
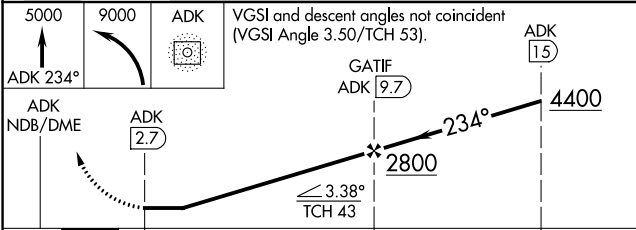
AWOS-3P 134.5	ANCHORAGE CENTER 126.4 254.3	CTAF 122.9
-------------------------	--	----------------------



AK, 16 MAY 2024 to 11 JUL 2024

AK, 16 MAY 2024 to 11 JUL 2024

ELEV 20	D TDZE 17
---------	------------------



CATEGORY	A	B	C	D
S-23	1600/60 1583 (1600-1¼)	1600-1½ 1583 (1600-1½)	1600-3 1583 (1600-3)	
CIRCLING	1600-1¼ 1580 (1600-1¼)	1600-1½ 1580 (1600-1½)	1600-3 1580 (1600-3)	2540-3 2520 (3000-3)

REIL Rwy 23

HIRL Rwy 5-23