

LEXINGTON, OKLAHOMA

COPTER RNAV (GPS) RWY 17

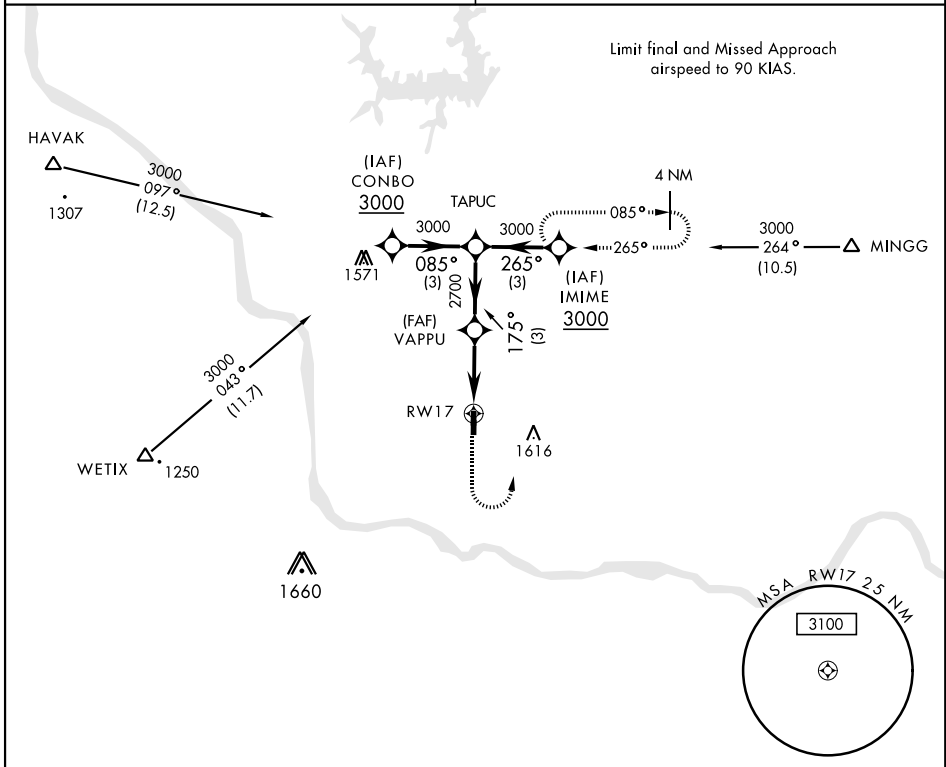
APCH CRS	Rwy Idg	2005
175°	TDZE	1091
	Arprt Elev	1091

AL-2497 [USA]

MULDROW AHP (KHMY)

<p>NA Obtain local altimeter setting on CTAF; when not received, use University of Oklahoma Westheimer altimeter setting minimums. DME/DME RNP-0.3 NA</p>	<p>MISSED APPROACH: Climbing left turn to 3000 direct IMIME and hold.</p>
--	---

<p>OKE CITY APP CON 124.2 336.4</p>	<p>MULDROW OPS (Advsvy Svc only) 46.9 139.425 227.2 (CTAF)</p>
--	---



SC-1, 16 MAY 2024 to 13 JUN 2024

SC-1, 16 MAY 2024 to 13 JUN 2024

<p>TAPUC 3000, 175°, VAPPU, 2700, RWY 17, 3.64°, 3 NM, 3 NM</p>		<p>3000 IMIME</p>	<p>ELEV 1091</p>	<p>TDZE 1091</p>
CATEGORY	COPTER			
LNAV MDA	1540-1 449 (500-1)			
UNIVERSITY OF OKLAHOMA WESTHEIMER ALTIMETER SETTING MINIMUMS				
LNAV MDA	1600-1 509 (600-1)			
<p>LRL Rwy 17-35</p>		<p>35, 1118, 1121, 1141, 1150, 2005 x 75, 175° to RWY 17</p>		

LEXINGTON, OKLAHOMA

35°02'N-97°14'W

MULDROW AHP (KHMY)

Orig 18200

COPTER RNAV (GPS) RWY 17