

LEXINGTON, OKLAHOMA

# COPTER RNAV (GPS) RWY 35

APCH CRS **355°**  
 Rwy Idg **2005**  
 TDZE **1091**  
 Arprt Elev **1091**

AL-2497 [USA]

MULDROW AHP (KHMV)

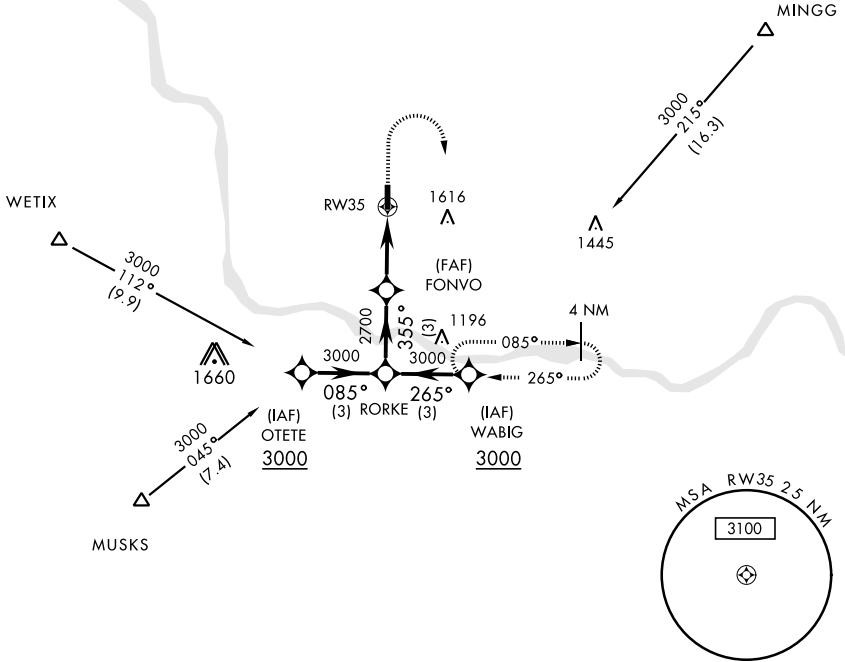
**NA** Obtain local altimeter setting on CTAF; when not received, use University of Oklahoma Westheimer altimeter setting minimums. DME/DME RNP-0.3 NA

**MISSED APPROACH:** Climbing right turn to 3000 direct WABIG and hold.

OKE CITY APP CON  
**124.2 336.4**

MULDROW OPS (Advsvy Svc only)  
**46.9 139.425 227.2** (CTAF)

Limit final and Missed Approach  
 airspeed to 90 KIAS.

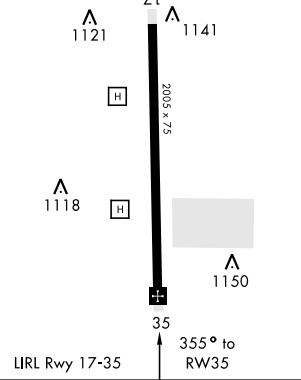
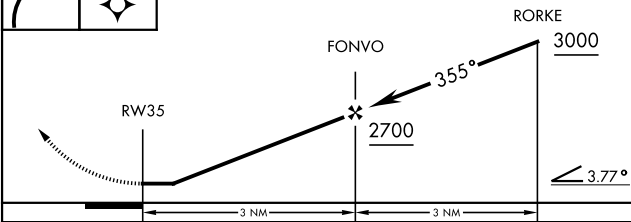


SC-1, 16 MAY 2024 to 13 JUN 2024

SC-1, 16 MAY 2024 to 13 JUN 2024

3000	WABIG

ELEV 1091 TDZE 1091



CATEGORY	COPTER
LNAV MDA	1500-1 409 (500-1)
UNIVERSITY OF OKLAHOMA WESTHEIMER ALTIMETER SETTING MINIMUMS	
LNAV MDA	1560-1 469 (500-1)

LIRL Rwy 17-35

LEXINGTON, OKLAHOMA

35°02'N-97°14'W

MULDROW AHP (KHMV)

Orig 18200

# COPTER RNAV (GPS) RWY 35