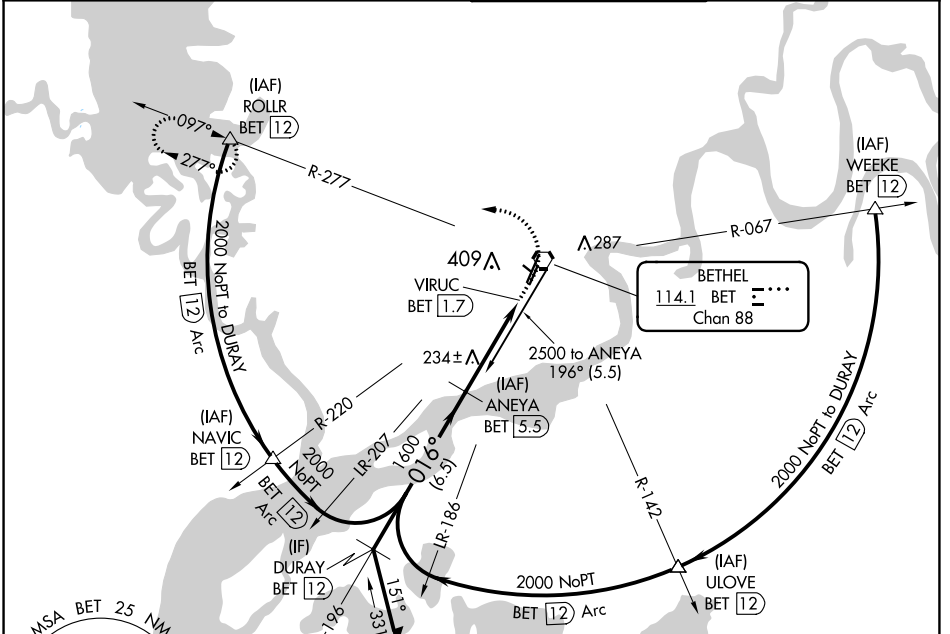


VORTAC BET 114.1 Chan 88	APP CRS 016°	Rwy ldg TDZE 127 Apt Elev 129
--	------------------------	---

VOR RWY 1L

BETHEL (BET)(PABE)

DME required. ▼ Circling NA west of Rwy 1L-19R. For inop ALS, increase S-1L Cat C/D visibility to RVR 5500. ▲		MALSR AS	MISSED APPROACH: Climb to 800 then climbing left turn to 2000 on BET VORTAC R-277 to ROLLR/12 DME and hold.
ATIS 119.8	ANCHORAGE CENTER 125.2 372.0	BETHEL TOWER * 118.7 (CTAF) 0	GND CON 121.7



AK, 16 MAY 2024 to 11 JUL 2024

AK, 16 MAY 2024 to 11 JUL 2024

