

APP CRS	Rwy Idg	9200
228°	TDZE	9
	Apt Elev	32

RNAV (GPS) RWY 23

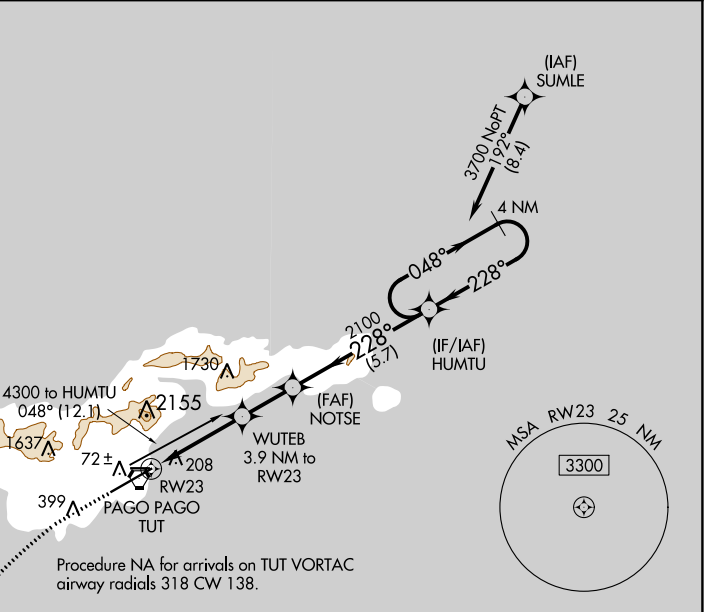
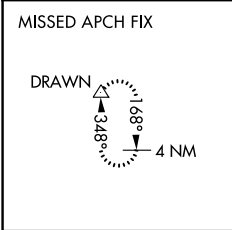
PAGO PAGO INTL (PPG) (NSTU)

RNP APCH.

▼ For uncompensated Baro-VNAV systems, LNAV/VNAV NA below 22°C or above 54°C. When local altimeter setting not received, procedure NA. Circling NA northwest of Rwy 5-23.

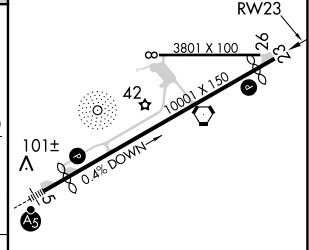
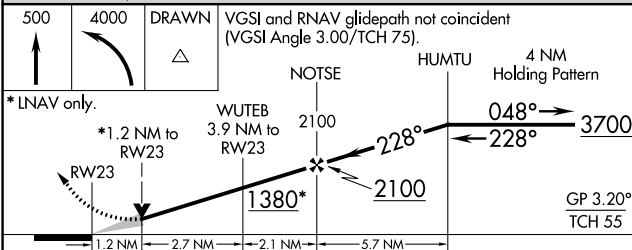
MISSED APPROACH: Climb to 500 then climbing left turn to 4000 direct DRAWN and hold.

AWOS-3PT 127.925	FALEOLO APP CON 118.1 6.553 (HF)	CTAF 122.9	118.3
----------------------------	--	----------------------	--------------



Procedure NA for arrivals on TUT VORTAC airway radials 318 CW 138.

ELEV 32	D TDZE 9
---------	-----------------



CATEGORY	A	B	C	D
LNAV/VNAV DA	489-1 ³ / ₈ 480 (500-1 ³ / ₈)			
LNAV MDA	460-1	451 (500-1)	460-1 ³ / ₈	451 (500-1 ³ / ₈)
C CIRCLING	520-1 488 (500-1)	700-1 668 (700-1)	820-2 ¹ / ₄ 788 (800-2 ¹ / ₄)	860-2 ³ / ₄ 828 (900-2 ³ / ₄)

HIRL Rwy 5-23 and 8-26