

PEVEE SIX DEPARTURE (RNAV)

TOP ALTITUDE:

CLEEE and CNERY TRANSITIONS: 17000;
OTATY and TCATE TRANSITIONS: FL200

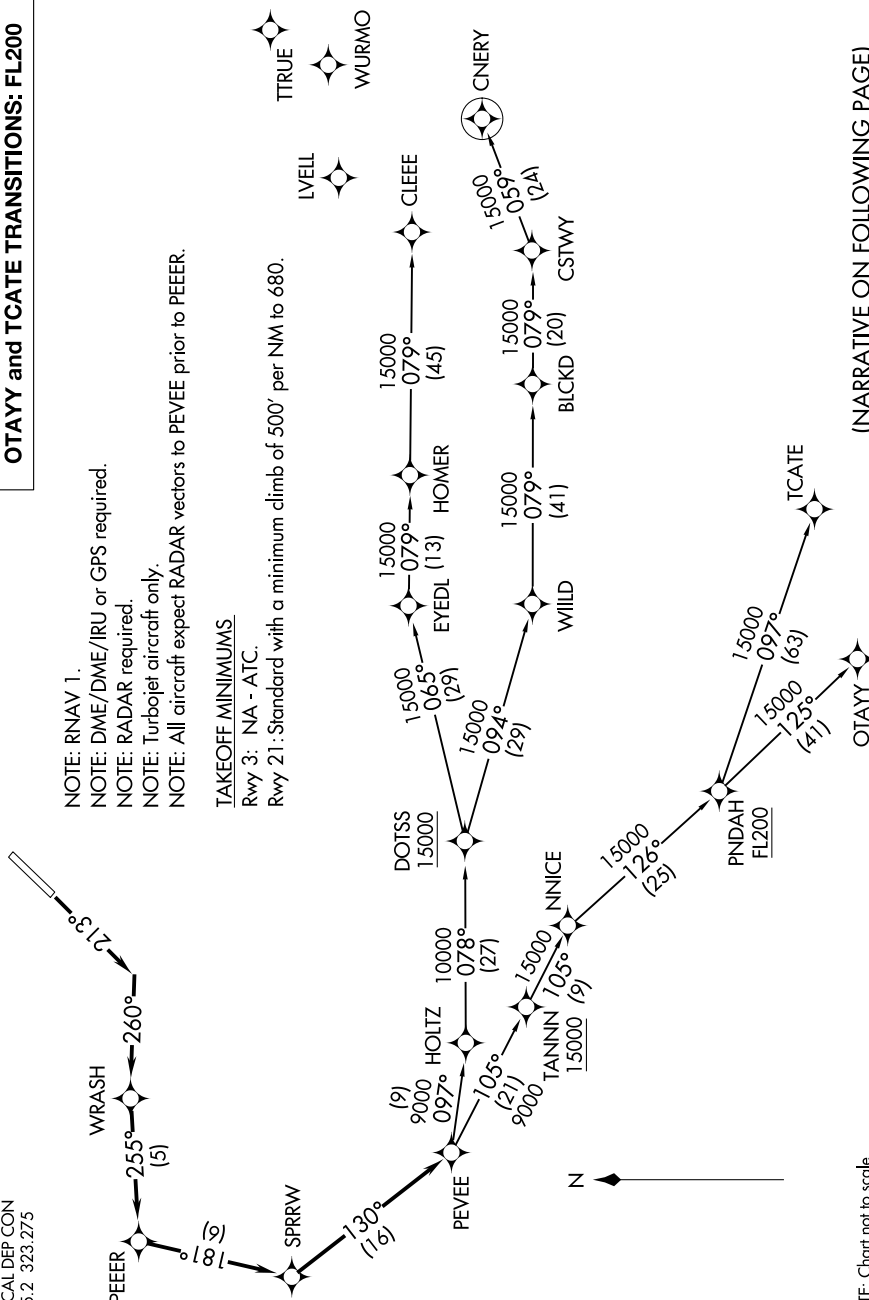
- NOTE: RNAV 1.
- NOTE: DME/DME/IRU or GPS required.
- NOTE: RADAR required.
- NOTE: Turbojet aircraft only.
- NOTE: All aircraft expect RADAR vectors to PEVEE prior to PEEER.

TAKEOFF MINIMUMS

Rwy 3: NA - ATC.

Rwy 21: Standard with a minimum climb of 500' per NM to 680.

SANTA MONICA TOWER ★
120.1 257.8
SOCAL DEP CON
125.2 323.275



NOTE: Chart not to scale.

(NARRATIVE ON FOLLOWING PAGE)