

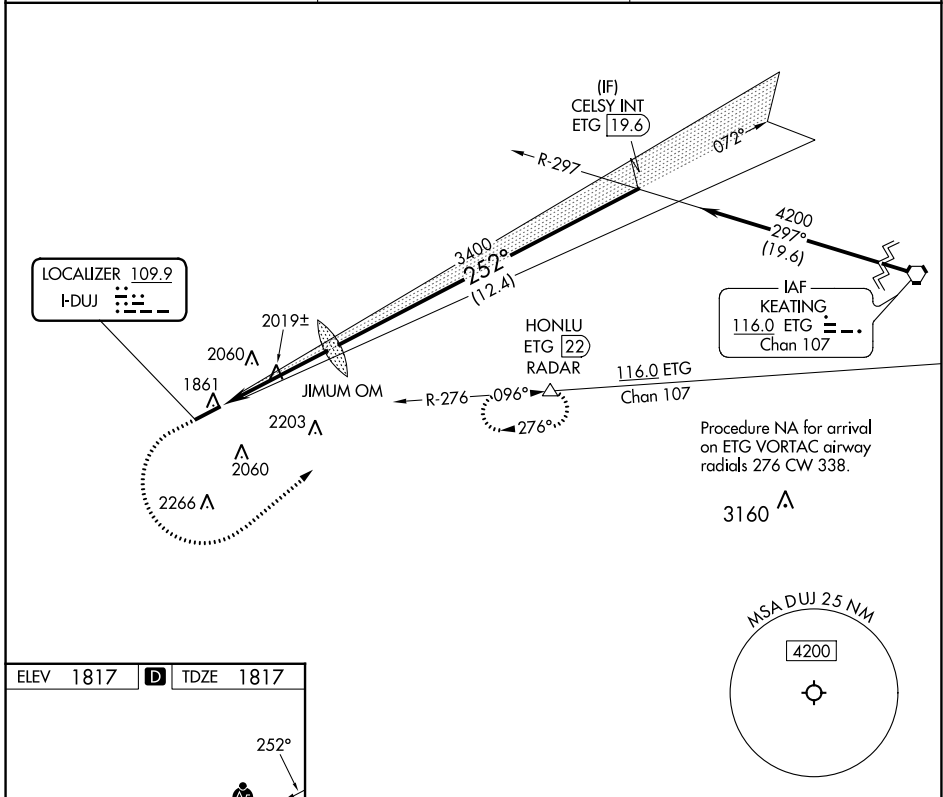
LOC I-DUJ <b>109.9</b>	APP CRS <b>252°</b>	Rwy Idg TDZE Apt Elev	<b>5503</b> <b>1817</b> <b>1817</b>
---------------------------	------------------------	-----------------------------	---

# ILS or LOC RWY 25

DUBOIS RGNL (DUJ)

<p><b>⚠</b> Circling NA for Cat D south of Rwy 7-25. For inop ALS, increase S-LOC 25 Cats C/D visibility to 1 3/8 SM.</p>	<p>MALSR</p>	<p>MISSED APPROACH: Climb to 2900 then climbing left turn to 4200 on heading 060° and ETG VORTAC R-276 to HONLU/ETG 22 DME/RADAR and hold.</p>
---	--------------	--

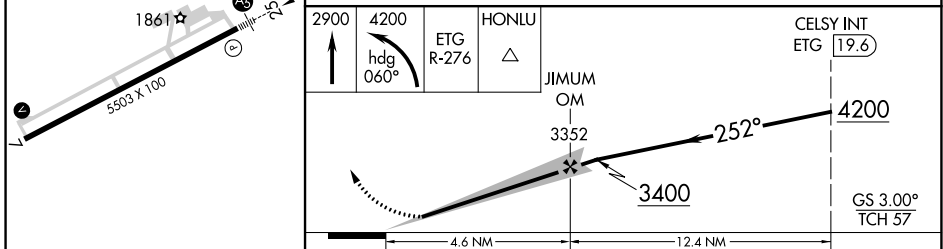
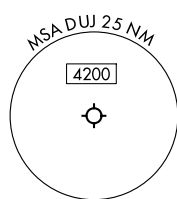
ASOS <b>119.025</b>	CLEVELAND CENTER <b>126.725 291.65</b>	UNICOM <b>123.0 (CTAF) 0</b>
------------------------	---	---------------------------------



NE-4, 16 MAY 2024 to 13 JUN 2024

NE-4, 16 MAY 2024 to 13 JUN 2024

ELEV 1817	<b>D</b>	TDZE 1817
-----------	----------	-----------



CATEGORY	A	B	C	D
S-ILS 25	2017-1/2		200 (200-1/2)	
S-LOC 25	2280-1/2 463 (500-1/2)		2280-1 463 (500-1)	
<b>C</b> CIRCLING	2320-1 503 (600-1)	2360-1 543 (600-1)	2380-1 1/2 563 (600-1 1/2)	2400-2 583 (600-2)

DUBOIS, PENNSYLVANIA  
Amdt 10 25FEB21

41°11'N-78°54'W

# ILS or LOC RWY 25

DUBOIS RGNL (DUJ)