

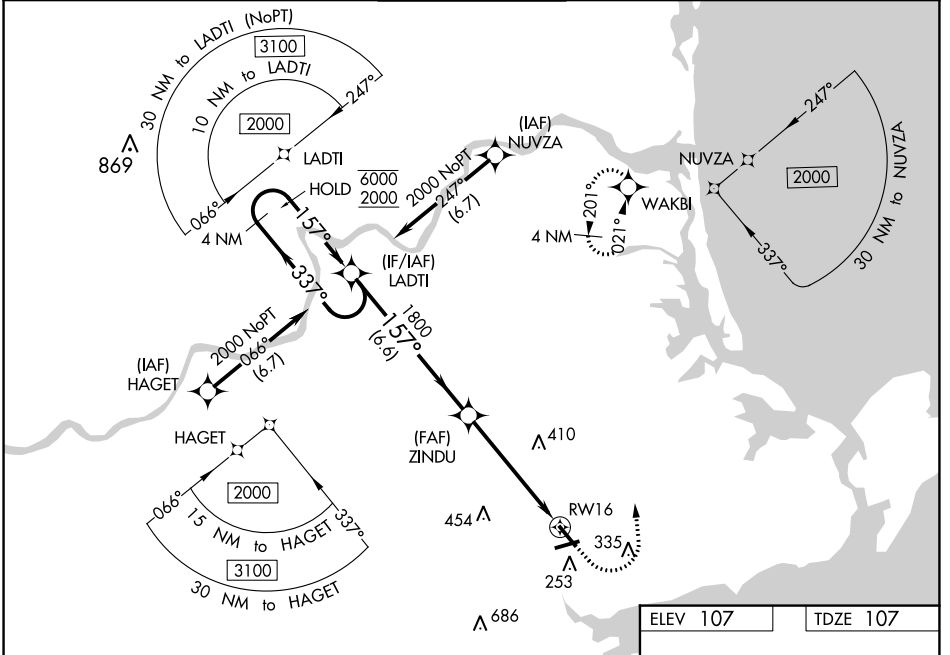
WAAS CH <b>93722</b> <b>W16A</b>	APP CRS <b>157°</b>	Rwy Idg <b>4762</b> TDZE <b>107</b> Apt Elev <b>107</b>
--	------------------------	---

# RNAV (GPS) RWY 16

BEVERLY RGNL (BVY)

RNP APCH-GPS.		MALS 	MISSED APPROACH: Climb to 600 then climbing left turn to 2000 direct WAKBI and hold.
 Circling Rwy 9 NA at night. Rwy 16 helicopter visibility reduction below 3/4 SM NA. Inop table does not apply. For uncompensated Baro-VNAV systems, LNAV/VNAV NA below -18° C or above 54° C.			

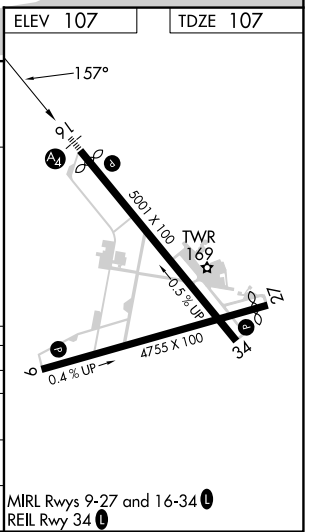
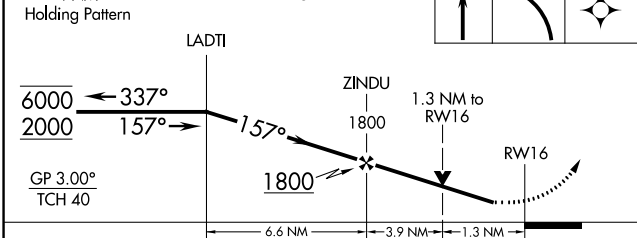
ATIS <b>119.2</b>	BOSTON APP CON <b>124.4 279.6</b>	BEVERLY TOWER★ <b>125.2 (CTAF) 0</b>	GND CON <b>121.6</b>	UNICOM <b>122.95</b>
----------------------	--------------------------------------	---	-------------------------	-------------------------



NE-1, 16 MAY 2024 to 13 JUN 2024

NE-1, 16 MAY 2024 to 13 JUN 2024

4 NM Holding Pattern	VGSI and RNAV glidepath not coincident (VGSI Angle 3.50/TCH 41).	600	2000	WAKBI
----------------------	--	-----	------	-------



CATEGORY	A	B	C	D
LPV DA		357-3/4	250 (300-3/4)	
LNAV/VNAV DA		422-7/8	315 (400-7/8)	
LNAV MDA	620-1	513 (600-1)	620-1 3/8	513 (600-1 3/8)
CIRCLING	620-1	513 (600-1)	820-2 713 (800-2)	820-2 1/4 713 (800-2 1/4)

MIRL Rwy 9-27 and 16-34  
REL Rwy 34