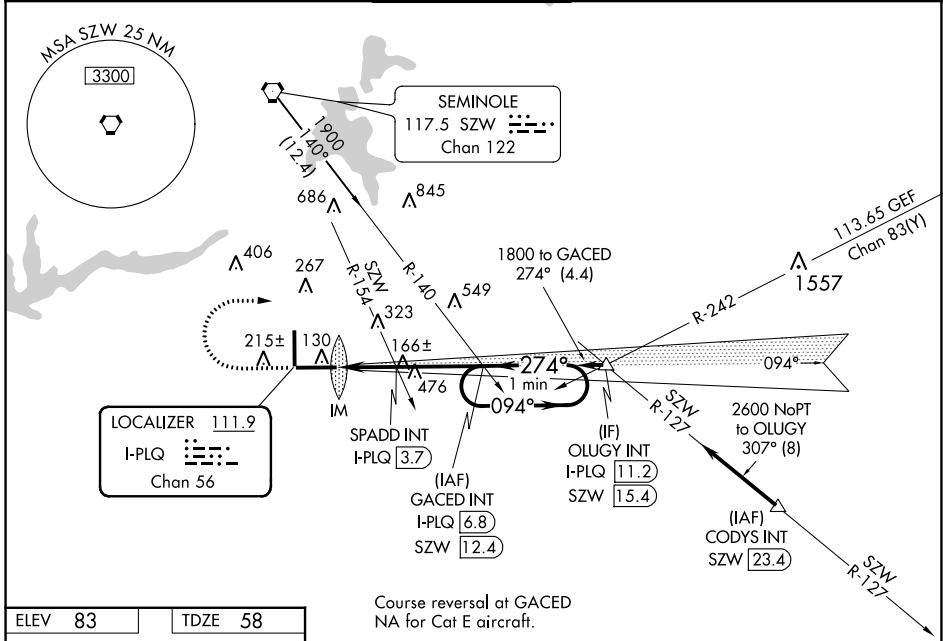


LOC/DME I-PLQ 111.9 Chan 56	APP CRS 274°	Rwy Idg TDZE Apt Elev	8000 58 83
---	------------------------	-----------------------------	---------------------------------------

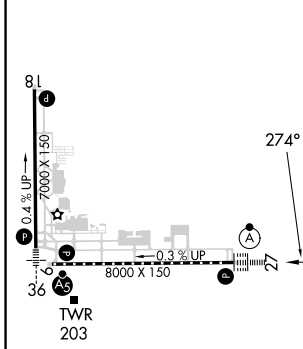
ILS or LOC RWY 27

TALLAHASSEE INTL (TLH)

DME required.	ALS5-2	MISSED APPROACH: Climb to 2000 then climbing right turn to 4000 on heading 092° and on SZW VORTAC R-140 to GACED INT/SZW 12.4 DME and hold, continue climb-in-hold to 4000.			
<p>▼ For inop ALS, increase S-ILS 27 Cat E visibility to RVR 4000 and S-LOC 27 Cats C, D and E visibility to 2 SM. SPADD FIX MINIMUMS increase S-LOC 27 Cats C, D and E visibility to RVR 5500.</p> <p>▲ ASR</p>					
ATIS 119.45 239.25	TALLAHASSEE APP CON ★ 135.8 317.4	TALLAHASSEE TOWER ★ 118.7 (CTAF) 257.8	GND CON 121.9 348.6	CLNC DEL 126.65 275.8	UNICOM 123.075



ELEV 83	TDZE 58
---------	---------



One Minute Holding Pattern	GACED INT I-PLQ 6.8 SZW 12.4
*LOC only	SPADD INT 1800
	I-PLQ 1.5 *I-PLQ 2.5 SPADD INT I-PLQ 3.7
	1800 094° 1800
	274° 1800
	GS 3.00° TCH 59

TDZ/CL Rwy 27
REIL Rwy 9 and 18
HIRL Rwy 9-27 and 18-36

FAF to MAP 5.3 NM

Knots	60	90	120	150	180
Min:Sec	5:18	3:32	2:39	2:07	1:46

CATEGORY	A	B	C	D	E
S-ILS 27	258/18 200 (200-1/2)				
S-LOC 27	800/24 742 (800-1/2)	800/40 742 (800-3/4)	800-1 3/4 742 (800-1 3/4)		
CIRCLING	800-1 717 (800-1)	800-1 1/4 717 (800-1 1/4)	800-2 717 (800-2)	800-2 1/4 717 (800-2 1/4)	1000-3 917 (1000-3)
SPADD FIX MINIMUMS					
S-LOC 27	420/24	362 (400-1/2)	420/35 362 (400-3/4)		
CIRCLING	580-1 497 (500-1)	600-1 517 (600-1)	640-1 1/2 557 (600-1 1/2)	800-2 1/4 717 (800-2 1/4)	1000-3 917 (1000-3)

SE-3, 16 MAY 2024 to 13 JUN 2024

SE-3, 16 MAY 2024 to 13 JUN 2024