

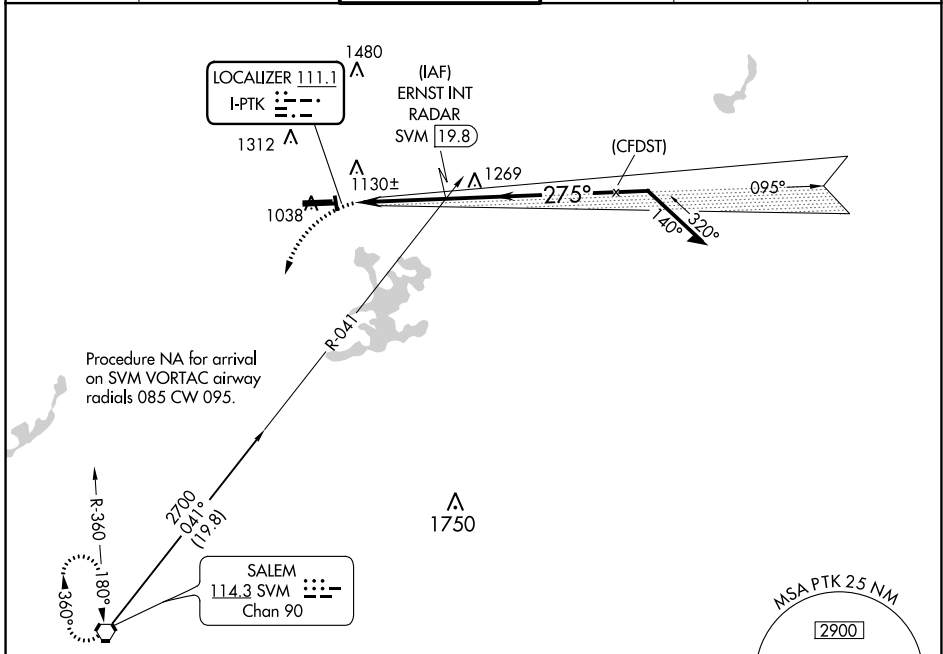
LOC I-PTK <b>111.1</b>	APP CRS <b>275°</b>	Rwy Idg <b>6520</b>
		TDZE <b>974</b>
		Apt Elev <b>981</b>

**LOC BC RWY 27L**  
OAKLAND COUNTY INTL (PTK)

**⚠** Circling Rwy 9L, 36 NA at night. When local altimeter setting not received, use Coleman A Young Muni altimeter setting and increase all MDA 120 feet, increase S-27L Cat C/D visibility  $\frac{3}{8}$  SM and Circling Cat C/D visibility  $\frac{1}{2}$  SM.

**MISSED APPROACH:**  
Climbing left turn to 3000 direct SVM VORTAC and hold.

ATIS <b>125.025</b>	DETROIT APP CON <b>132.35 284.0</b>	PONTIAC TOWER * <b>120.5 (CTAF) 0</b>	GND CON <b>121.9</b>	CLNC DEL <b>118.25</b>	UNICOM <b>122.95</b>
------------------------	--	--	-------------------------	---------------------------	-------------------------



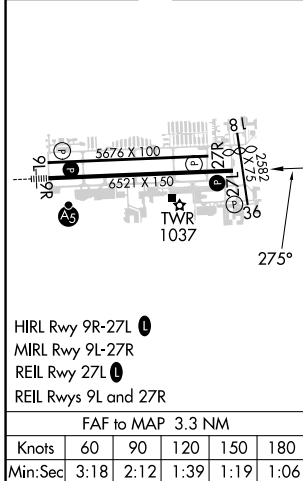
Procedure NA for arrival on SVM VORTAC airway radials 085 CW 095.

EC-1, 16 MAY 2024 to 13 JUN 2024

EC-1, 16 MAY 2024 to 13 JUN 2024

ELEV 981	<b>D</b>	TDZE 974
----------	----------	----------

**BACK COURSE**



HIRL Rwy 9R-27L **0**  
MIRL Rwy 9L-27R  
REIL Rwy 27L **0**  
REIL Rws 9L and 27R

FAF to MAP 3.3 NM

Knots	60	90	120	150	180
Min:Sec	3:18	2:12	1:39	1:19	1:06

3000	SVM	ERNST INT RADAR			
Remain within 10 NM		Disregard GS indications.			
I-PTK		TCH 42			
0.7		3.3 NM			
CATEGORY	A	B	C	D	
S-LOC 27L	1 440-1	466 (500-1)	1 440-1 $\frac{3}{8}$	466 (500-1 $\frac{3}{8}$ )	
<b>C</b> CIRCLING	1 500-1	1 540-1	1 640-1 $\frac{3}{4}$	1 640-2	
	519 (600-1)	559 (600-1)	659 (700-1 $\frac{3}{4}$ )	659 (700-2)	