

EC-1, 16 MAY 2024 to 13 JUN 2024

ATIS  
125.025  
CLNC DEL  
118.25  
GND CON  
121.9  
PONTIAC TOWER ★  
120.5 (CTAF)  
DETROIT DEP CON  
132.35 284.0

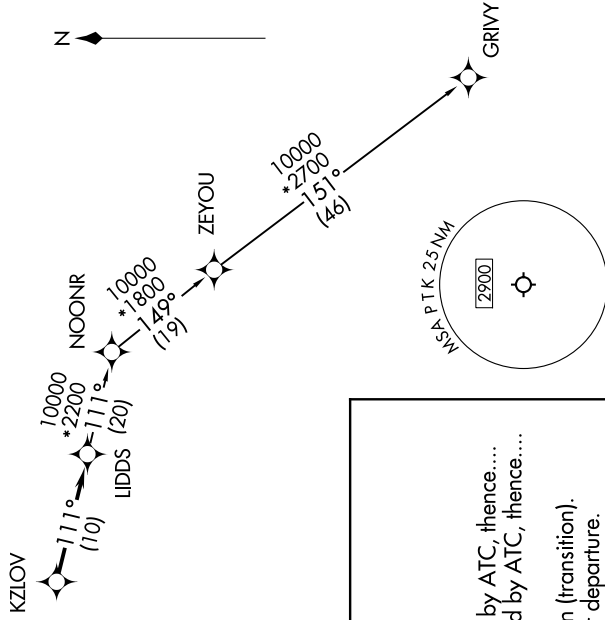
RNAV 1 - DME/DME/IRU or GPS.  
RADAR required.



NOTE: Turboprop departures at/above 10000, maintain 280K until advised by ATC.

TAKEOFF MINIMUMS:

Rwys 18, 36: NA-Environmental.  
Rwys 9L/R, 27L/R: Standard.



NOTE: Chart not to scale.

**TOP ALTITUDE:  
ASSIGNED BY ATC**

**DEPARTURE ROUTE DESCRIPTION**

TAKEOFF RUNWAYS 9L/R: Climb on heading 095° or as assigned by ATC, thence....  
TAKEOFF RUNWAYS 27L/R: Climb on heading 275° or as assigned by ATC, thence....

...for RADAR vectors to KZLOV, then on track 111° to LIDDS, then on (transition).  
Maintain ATC assigned altitude, expect filed altitude 10 minutes after departure.

GRIVY TRANSITION (LIDDS3.GRIVY):

EC-1, 16 MAY 2024 to 13 JUN 2024