

(TRMML4.TRMML) 24137

TRMML FOUR DEPARTURE (RNAV)

AL-5052 (FAA)

OAKLAND COUNTY INTL (PTK)

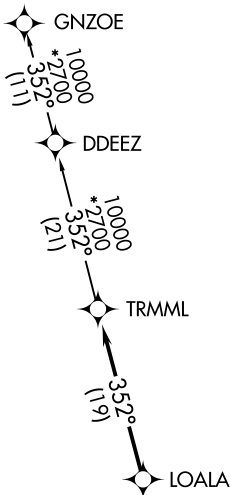
PONTIAC, MICHIGAN

**TOP ALTITUDE:
ASSIGNED BY ATC**

RNAV 1 - DME/DME/IRU or GPS.

RADAR required.

DETROIT DEP CON
132.35 284.0
ATIS
125.025
CLNC DEL
118.25
GND CON
121.9
PONTIAC TOWER *
120.5 (CTAF)



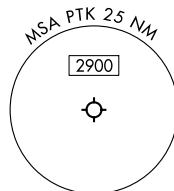
TAKEOFF MINIMUMS:

Rwys 18, 36: NA - Environmental.
Rwys 9L/R, 27L/R: Standard.



NOTE: Turbojet departures at/above 10000,
maintain 280K until advised by ATC.

NOTE: Chart not to scale.



DEPARTURE ROUTE DESCRIPTION

TAKEOFF RUNWAYS 9L/R: Climb on heading 095° or as assigned by ATC,
thence....

TAKEOFF RUNWAYS 27L/R: Climb on heading 275° or as assigned by ATC,
thence....

....for RADAR vectors to LOALA, then on track 352° to TRMML, then on (transition).
Maintain ATC assigned altitude, expect filed altitude 10 minutes after departure.

GNZOE TRANSITION (TRMML4.GNZOE):

TRMML FOUR DEPARTURE (RNAV)

(TRMML4.TRMML) 16MAY24

PONTIAC, MICHIGAN

OAKLAND COUNTY INTL (PTK)

EC-1, 16 MAY 2024 to 13 JUN 2024

EC-1, 16 MAY 2024 to 13 JUN 2024