

APP CRS 050°	Rwy Idg 5101
	TDZE 575
	Apt Elev 578

RNAV (GPS) RWY 5

HARTNESS STATE (SPRINGFIELD) (V51F)

RNP APCH - GPS.

⚠ Circling Rwy 11, 23, 29 NA at night.
Rwy 5 helicopter visibility reduction below ¾ SM NA.

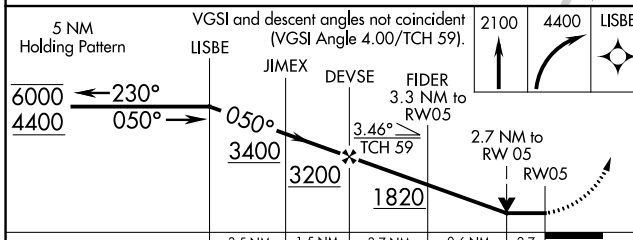
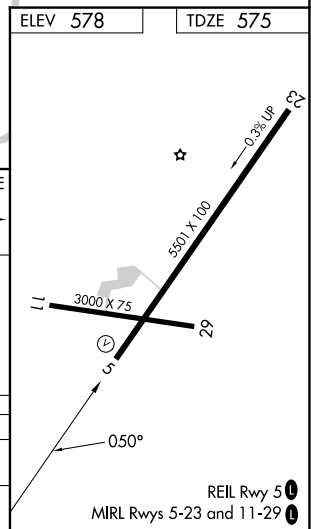
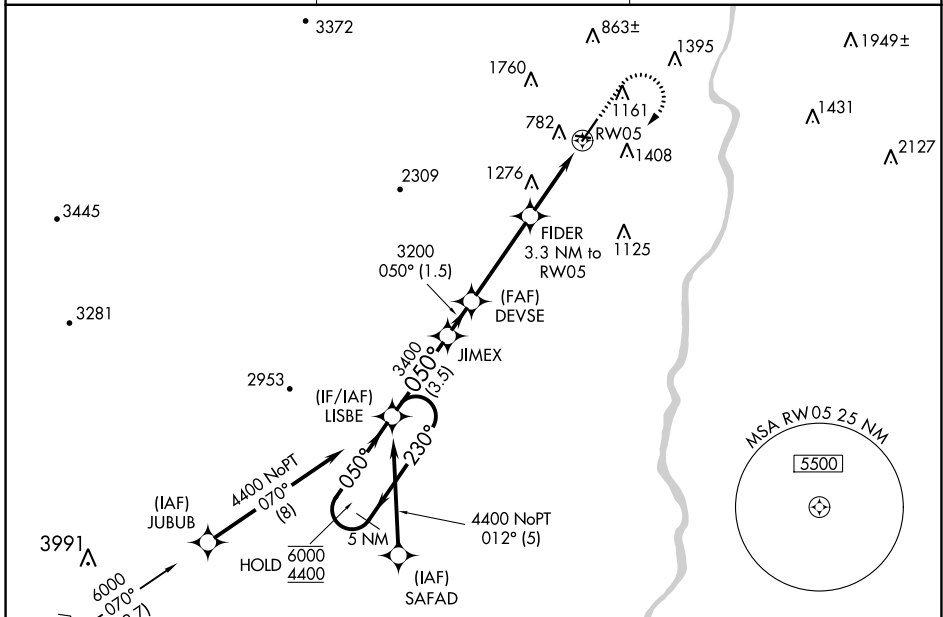
❄ -20°C

MISSED APPROACH: Climb to 2100 then climbing right turn to 4400 direct LISBE and hold.

ASOS
121.425

BOSTON CENTER
134.7 269.475

UNICOM
122.8 (CTAF) 0



CATEGORY	A	B	C	D
LNNAV MDA	1780-1¼ 1205 (1300-1¼)	1780-1½ 1205 (1300-1½)	1780-3	1205 (1300-3)
C CIRCLING	1780-1¼ 1202 (1300-1¼)	1780-1½ 1202 (1300-1½)	2600-3	2022 (2100-3)

NE-1, 16 MAY 2024 to 13 JUN 2024

NE-1, 16 MAY 2024 to 13 JUN 2024