

LOC/DME I-TXN <b>111.55</b> Chan <b>52 (Y)</b>	APP CRS <b>021°</b>	Rwy Idg <b>8000</b>
		TDZE <b>867</b>
		Apt Elev <b>871</b>

# ILS or LOC RWY 2

CENTRAL IL RGNL/BLOOMINGTON-NORMAL (BMI)

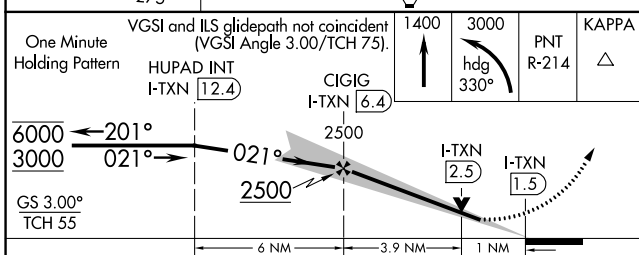
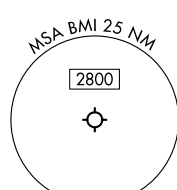
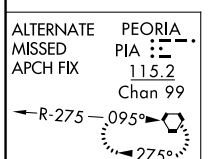
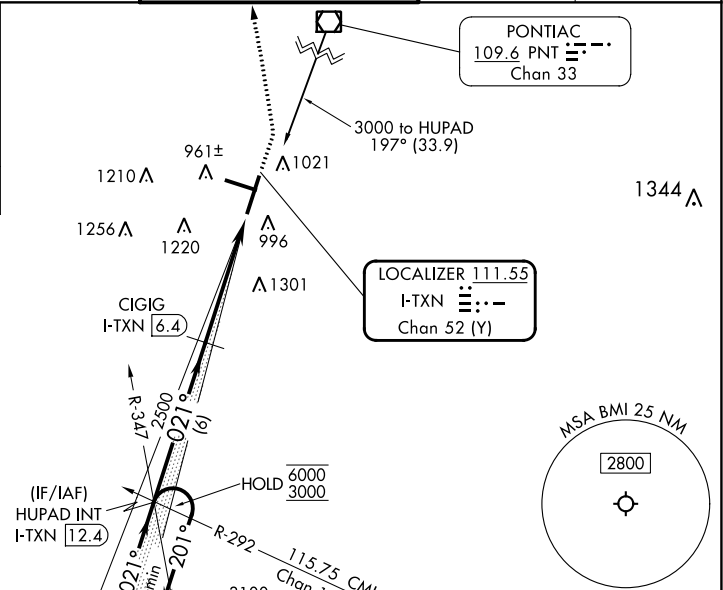
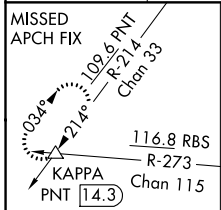
DME required for LOC only.

Autopilot coupled approach NA below 1100.  
Inop table does not apply to S-ILS 2.  
For inop ALS, increase S-LOC 2 Cat A/B visibility to RVR 5500 and Cat C/D visibility to RVR 6000.

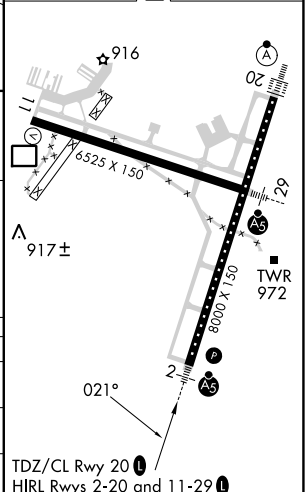
**MALSR**

MISSED APPROACH: Climb to 3000 on heading 330° and on PNT VOR/DME R-214 to KAPPA INT/PNT 14.3 DME and hold.

ATIS <b>135.35</b>	SAINT LOUIS APP CON <b>128.725 256.9</b>	BLOOMINGTON TOWER ★ <b>124.6 (CTAF) 0 269.575</b>	GND CON <b>121.65</b>	UNICOM <b>122.95</b>
-----------------------	---	--	--------------------------	-------------------------



ELEV 871	TDZE 867
----------	----------



CATEGORY	A	B	C	D
S-ILS 2		1067/40	200 (200-¾)	
S-LOC 2		1260/40	393 (400-¾)	
CIRCLING	1340-1	469 (500-1)	1620-2¼ 749 (800-2¼)	1620-2½ 749 (800-2½)

TDZ/CL Rwy 20  
HIRL Rwy 2-20 and 11-29

# ILS or LOC RWY 2

EC-3, 16 MAY 2024 to 13 JUN 2024

EC-3, 16 MAY 2024 to 13 JUN 2024