

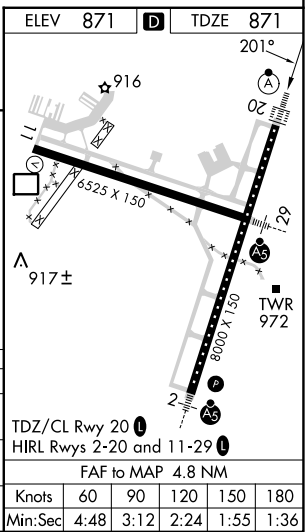
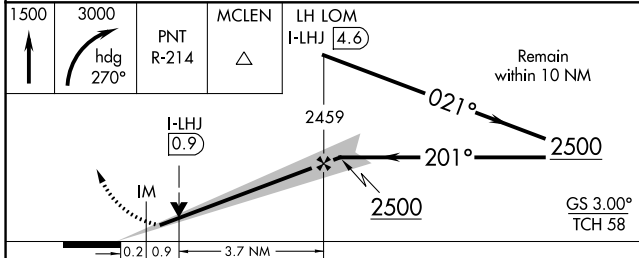
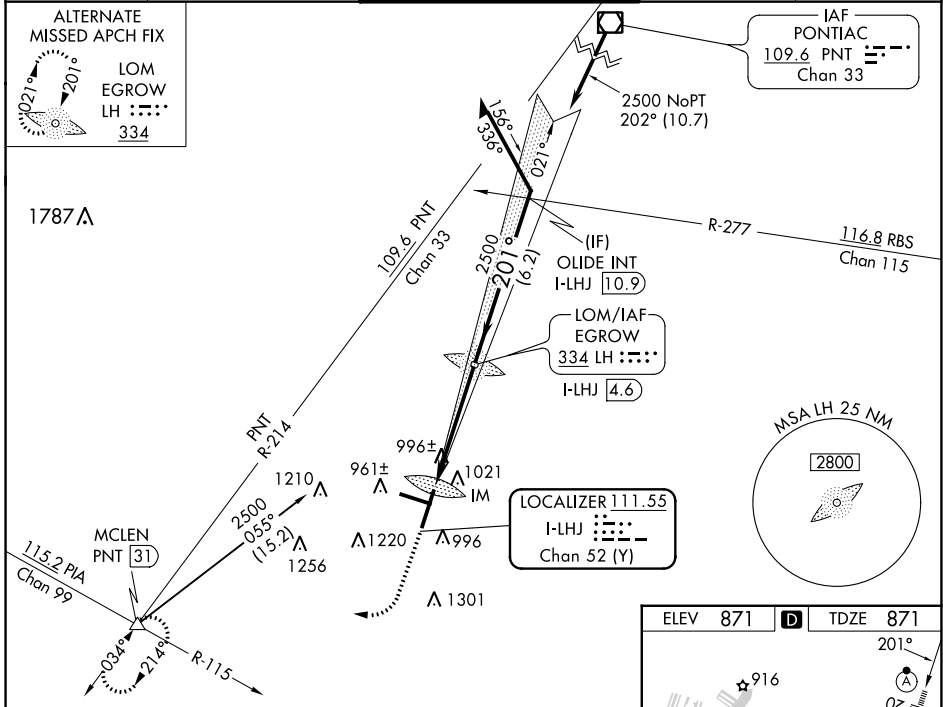
LOC/DME I-LHJ 111.55 Chan 52 (Y)	APP CRS 201°	Rwy Idg TDZE Apt Elev	8000 871 871
--	------------------------	-----------------------------	---

ILS or LOC RWY 20

CENTRAL IL RGNL/BLOOMINGTON-NORMAL (BMI)

	MISSED APPROACH: Climb to 1500 then climbing right turn to 3000 on heading 270° and on PNT VOR/DME R-214 to MCLEN INT/PNT 31 DME and hold.			

ATIS 135.35	SAINT LOUIS APP CON 128.725 256.9	BLOOMINGTON TOWER ★ 124.6 (CTAF) 269.575	GND CON 121.65	UNICOM 122.95
-----------------------	---	--	--------------------------	-------------------------



CATEGORY	A	B	C	D
S-ILS 20	1071/18		200 (200-½)	
S-LOC 20	1260/24	389 (400-½)	1260/35	389 (400-¾)
CIRCLING	1340-1	469 (500-1)	1620-2¼ 749 (800-2¼)	1620-2½ 749 (800-2½)

EC-3, 16 MAY 2024 to 13 JUN 2024

EC-3, 16 MAY 2024 to 13 JUN 2024