

WAAS CH 97617 W11A	APP CRS 111°	Rwy Idg 6525 TDZE 871 Apt Elev 871
--	------------------------	---

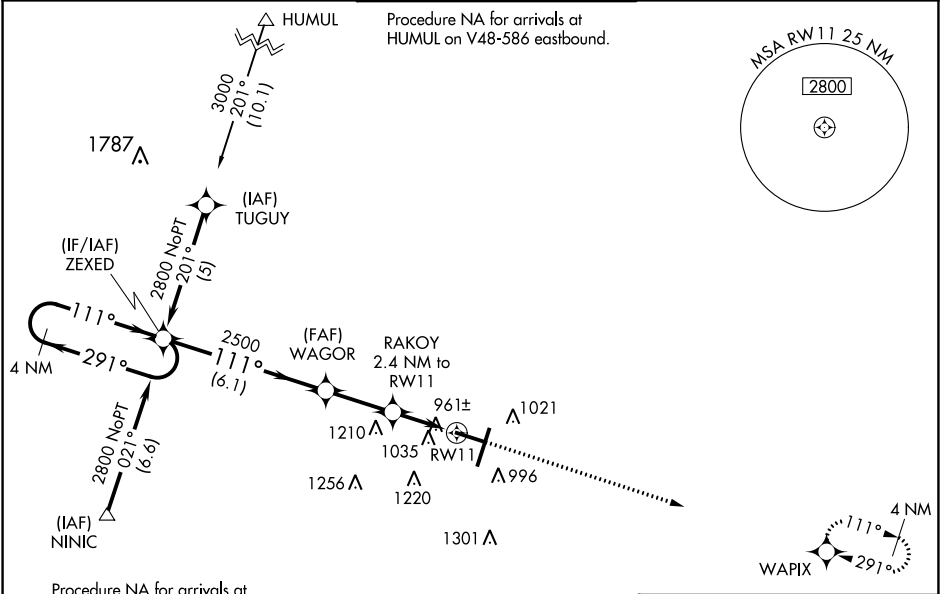
RNAV (GPS) RWY 11

CENTRAL IL RGNL/BLOOMINGTON-NORMAL (BMI)

⚠ For uncompensated Baro-VNAV systems, LNAV/VNAV NA below -1.6°C (4°F) or above 54°C (130°F). DME/DME RNP-0.3 NA. Baro-VNAV and VDP NA when using General Downing-Peoria Intl altimeter setting. When local altimeter setting not received, use General Downing-Peoria Intl setting: increase all DA 116 feet and all MDA 120 feet; increase LPV all Cats visibility ½ mile, LNAV/VNAV all Cats and LNAV Cat C/D visibility ¾ mile, and Circling Cats C/D visibility ½ mile.

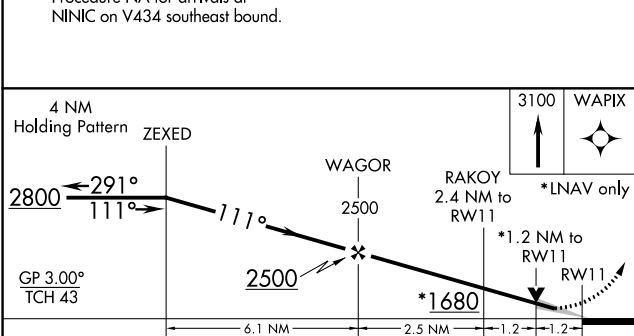
MISSED APPROACH:
Climb to 3100 direct
WAPIX and hold.

ATIS 135.35	SAINT LOUIS APP CON 128.725 256.9	BLOOMINGTON TOWER * 124.6 (CTAF) 269.575	GND CON 121.65	UNICOM 122.95
-----------------------	---	---	--------------------------	-------------------------



EC-3, 16 MAY 2024 to 13 JUN 2024

EC-3, 16 MAY 2024 to 13 JUN 2024



CATEGORY	A	B	C	D
LPV DA		1121-3/4	250 (300-3/4)	
LNAV/VNAV DA		1341-15/8	470 (500-15/8)	
LNAV MDA	1280-1	409 (500-1)	1280-1 1/4	409 (500-1 1/4)
C CIRCLING	1340-1	469 (500-1)	1620-2 1/4	1620-2 1/2
			749 (800-2 1/4)	749 (800-2 1/2)

