

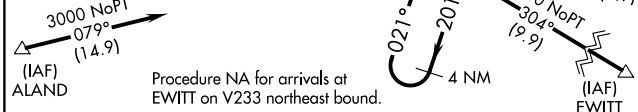
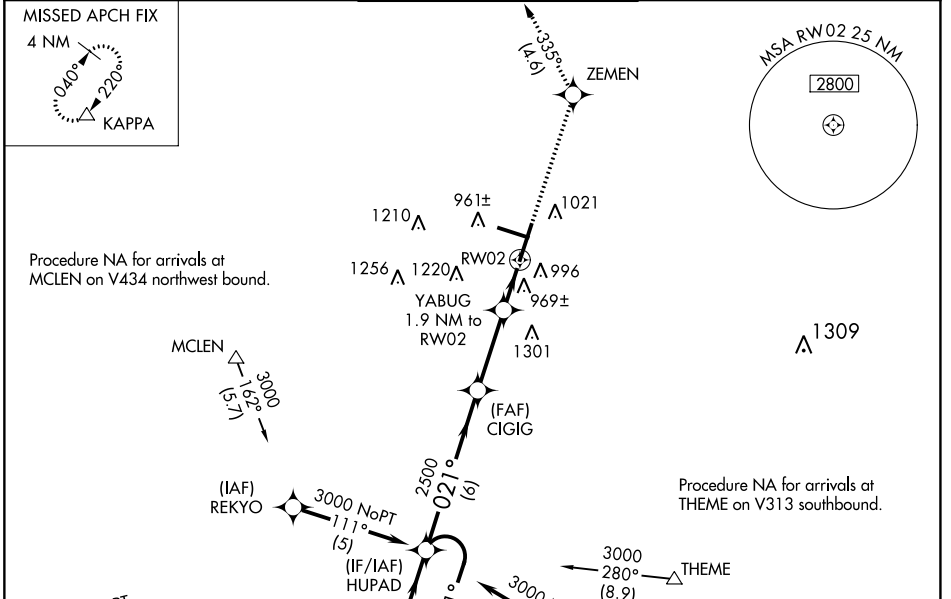
WAAS CH 56303 W02A	APP CRS 021°	Rwy Idg 8000 TDZE 867 Apt Elev 871
--	------------------------	---

RNAV (GPS) RWY 2

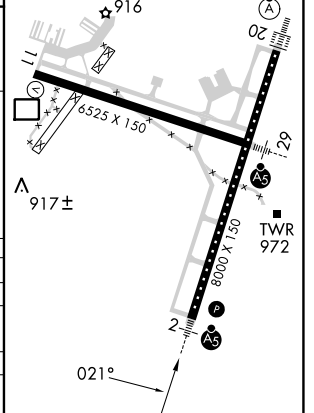
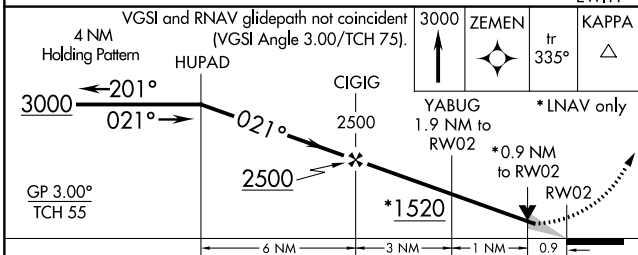
CENTRAL IL RGNL/BLOOMINGTON-NORMAL (BMI)

RNP APCH. ▼ For uncompensated Baro-VNAV systems, LNAV/VNAV NA below -16°C or above 54°C. Baro-VNAV and VDP NA when using General Downing-Peoria Intl altimeter setting. When local altimeter setting not received, use General Downing-Peoria Intl altimeter setting: increase all DA 116 feet and all MDA 120 feet; increase LPV and LNAV/VNAV all Cats visibility ½ SM, LNAV Cats C/D visibility ¾ SM, and Circling all Cats visibility ¼ SM. Inop table does not apply.		MALSR 	MISSED APPROACH: Climb to 3000 direct ZEMEN then on track 335° to KAPPA and hold.
---	--	-----------	--

ATIS 135.35	SAINT LOUIS APP CON 128.725 256.9	BLOOMINGTON TOWER * 124.6 (CTAF) 0 269.575	GND CON 121.65	UNICOM 122.95
-----------------------	---	--	--------------------------	-------------------------



ELEV 871	TDZE 867
TDZ/CL Rwy 20	HIRL Rwy 2-20 and 11-29



CATEGORY	A	B	C	D
LPV DA	1214-1¼	347 (400-1¼)		
LNAV/VNAV DA	1269-1¼	402 (400-1¼)		
LNAV MDA	1220-1	353 (400-1)	1220-1¼	353 (400-1¼)
CIRCLING	1340-1	469 (500-1)	1620-2¼	1620-2½
			749 (800-2¼)	749 (800-2½)

EC-3, 16 MAY 2024 to 13 JUN 2024

EC-3, 16 MAY 2024 to 13 JUN 2024