

LOC/DME I-ROF <b>111.15</b> Chan <b>48 (Y)</b>	APP CRS <b>328°</b>	Rwy Idg TDZE Apt Elev	<b>5503</b> <b>705</b> <b>712</b>
------------------------------------------------------	------------------------	-----------------------------	-----------------------------------------

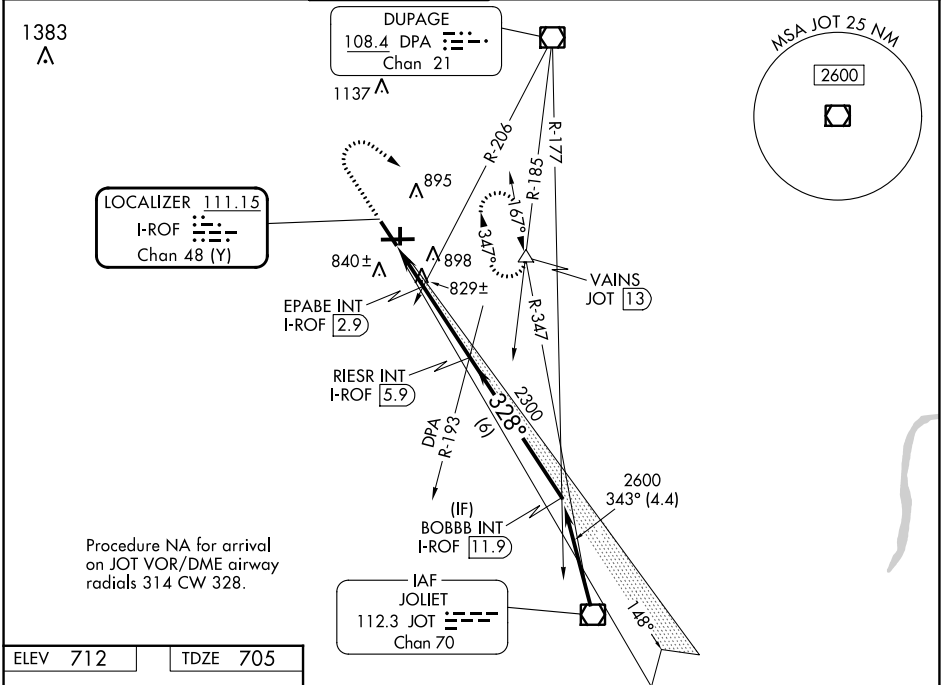
# LOC RWY 33

AURORA MUNI (A.R.R.)

**▼** For inop ALS, increase S-LOC 33 Cats C and D visibility to 1 3/4 SM and EPABE FIX minimums S-LOC 33 Cats C and D visibility to 1 SM.

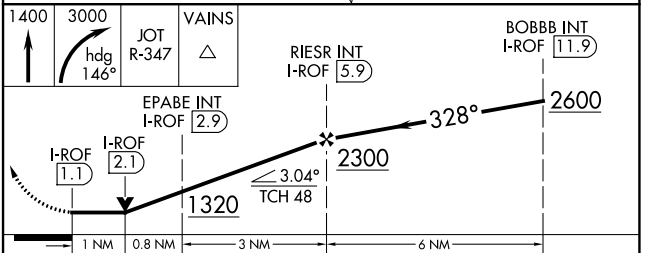
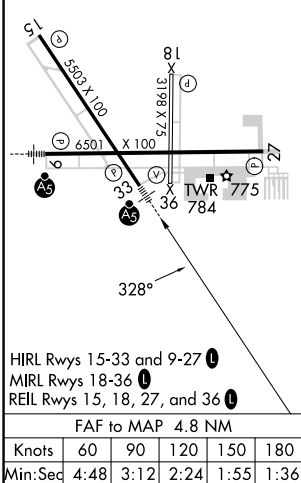
**MALSR** MISSED APPROACH: Climb to 1400 then climbing right turn to 3000 on heading 146° and JOT VOR/DME R-347 to VAINS INT/JOT 13 DME and hold, continue climb-in-hold to 3000.

ATIS <b>125.85</b>	CHICAGO APP CON <b>133.5 349.0</b>	AURORA TOWER★ <b>120.6 (CTAF) 0</b>	GND CON <b>121.7</b>	CLNC DEL <b>121.7</b> (When tower closed)	UNICOM <b>122.95 123.5</b>
-----------------------	---------------------------------------	----------------------------------------	-------------------------	-------------------------------------------------	-------------------------------



Procedure NA for arrival on JOT VOR/DME airway radials 314 CW 328.

ELEV 712	TDZE 705
----------	----------



CATEGORY	A	B	C	D
S-LOC 33	1320-1/2	615 (700-1/2)	1320-1 3/8	615 (700-1 3/8)
<b>C</b> CIRCLING	1320-1	608 (700-1)	1320-1 3/4 608 (700-1 3/4)	1320-2 608 (700-2)
EPABE FIX MINIMUMS (DUAL VOR RECEIVERS or DME REQUIRED)				
S-LOC 33	1080-1/2	375 (400-1/2)	1080-5/8	375 (400-5/8)
<b>C</b> CIRCLING	1200-1	488 (500-1)	1300-1 1/2 588 (600-1 1/2)	1320-2 608 (700-2)

EC-3, 16 MAY 2024 to 13 JUN 2024

EC-3, 16 MAY 2024 to 13 JUN 2024