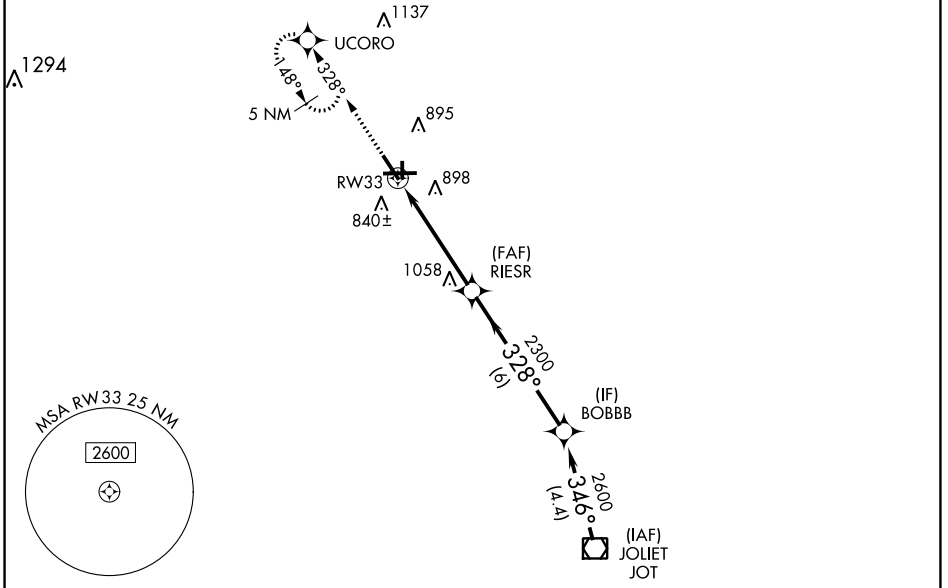


WAAS CH 49105 W33A	APP CRS 328°	Rwy ldg 5503 TDZE 705 Apt Elev 712
--	------------------------	---

RNAV (GPS) RWY 33

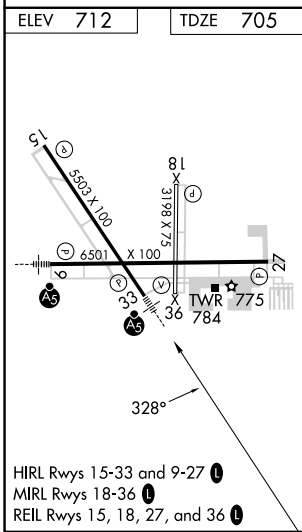
AURORA MUNI (A.R.R.)

RNP APCH - GPS.				MALSR 		MISSED APPROACH: Climb to 3000 direct UCORO and hold, continue climb-in-hold to 3000.	
ATIS 125.85	CHICAGO APP CON 133.5 349.0	AURORA TOWER * 120.6 (CTAF) 0	GND CON 121.7	CLNC DEL 121.7 (When tower closed)	UNICOM 122.95 123.5		



EC-3, 16 MAY 2024 to 13 JUN 2024

EC-3, 16 MAY 2024 to 13 JUN 2024



Procedure NA for arrival on JOT VOR/DME airway radials 314 CW 328.

3000 UCORO				
*LNAV only.	RW33	RIESR	BOBBB	JOT VOR/DME
	1.3 NM	3.5 NM	6 NM	4.4 NM
	2300	2300	2600	2600
	328°	328°	346°	GP 3.00° TCH 48
CATEGORY	A	B	C	D
LPV DA	1042-3/4 337 (400-3/4)			
LNAV/VNAV DA	1194-1 1/4 489 (500-1 1/4)			
LNAV MDA	1140-3/4 435 (500-3/4)		1140-1 435 (500-1)	
CIRCLING	1200-1 488 (500-1)		1300-1 1/2 608 (700-2)	