

| | | |
|--|------------------------|---|
| LOC/DME I-GSP 109.3 Chan 30 | APP CRS 038° | Rwy Idg 1101 TDZE 947 Apt Elev 964 |
|--|------------------------|---|

ILS RWY 4 (CAT II & III)

GREENVILLE SPARTANBURG INTL (GSP)

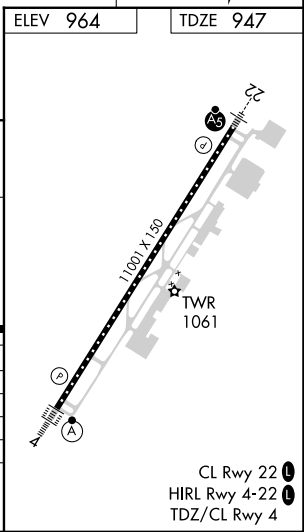
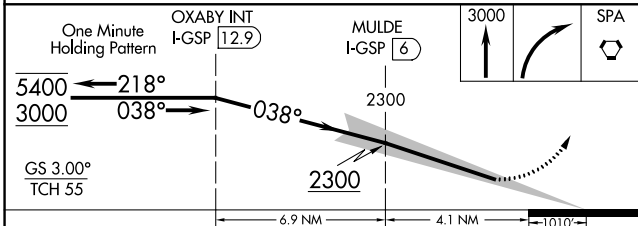
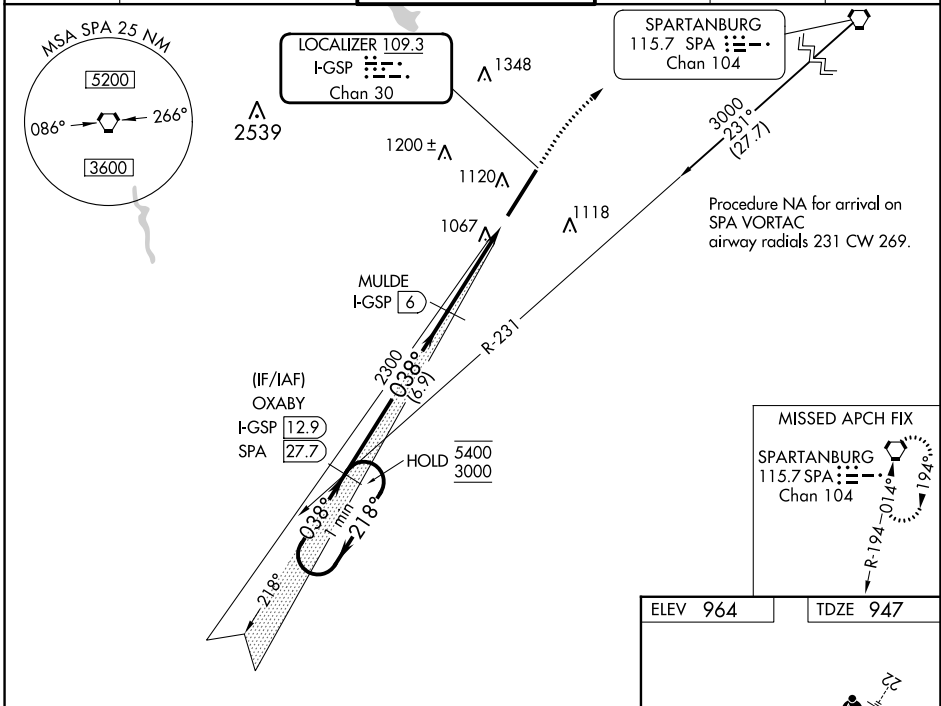
DME required.

CAT II: RVR 1000 authorized with specific OPSPEC, MSPEC, or LOA approval and use of autoland or HUD to touchdown. Procedure NA when control tower closed.

ALS-F-2

MISSED APPROACH: Climb to 3000 then right turn direct SPA VORTAC and hold.

| | | | | | |
|-----------------------|--|--|-------------------------|--------------------------|-------------------------|
| ATIS 134.25 | GREER APP CON* 118.8 270.275 | GREER TOWER* 120.1 (CTAF) 251.15 | GND CON 121.9 | CLNC DEL 121.9 | UNICOM 122.95 |
|-----------------------|--|--|-------------------------|--------------------------|-------------------------|



| CATEGORY | A | B | C | D |
|----------|------------------|---|-------------|---|
| S-ILS 4 | CAT II RA 142/12 | | 100 DA 1047 | |
| S-ILS 4 | CAT IIIa | | RVR 07 | |
| S-ILS 4 | CAT IIIb | | RVR 06 | |
| S-ILS 4 | CAT IIIc | | NA | |

CATEGORY II & III ILS - SPECIAL AIRCREW & AIRCRAFT CERTIFICATION REQUIRED

SE-2, 16 MAY 2024 to 13 JUN 2024

SE-2, 16 MAY 2024 to 13 JUN 2024