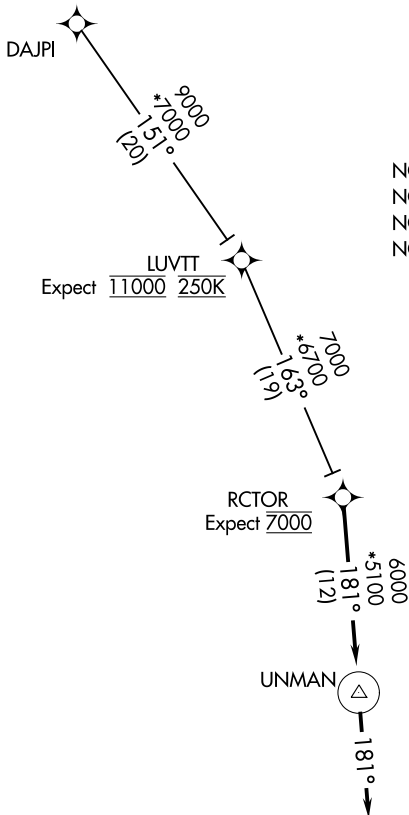


RCTOR TWO ARRIVAL (RNAV)

GREER, SOUTH CAROLINA

GREER APP CON
 118.8 270.275 (WEST)
 119.4 350.2 (EAST)
 GMU ATIS *
 127.075
 GSP ATIS
 134.25



- NOTE: RADAR required.
- NOTE: RNAV 1.
- NOTE: DME/DME/IRU or GPS required.
- NOTE: Turbojet and Turboprop aircraft only.

LUVTT
 Expect 11000 250K

RCTOR
 Expect 7000

UNMAN

SPARTANBURG DOWNTOWN MEHL/
 SIMPSON FLD

GREENVILLE
 DOWNTOWN

GREENVILLE
 SPARTANBURG
 INTL

DONALDSON
 FLD

NOTE: Chart not to scale.

ARRIVAL ROUTE DESCRIPTION

DAJPI TRANSITION (DAJPI.RCTOR2)

From RCTOR on track 181° to UNMAN, then on heading 181°. Expect RADAR vectors to final approach course.