

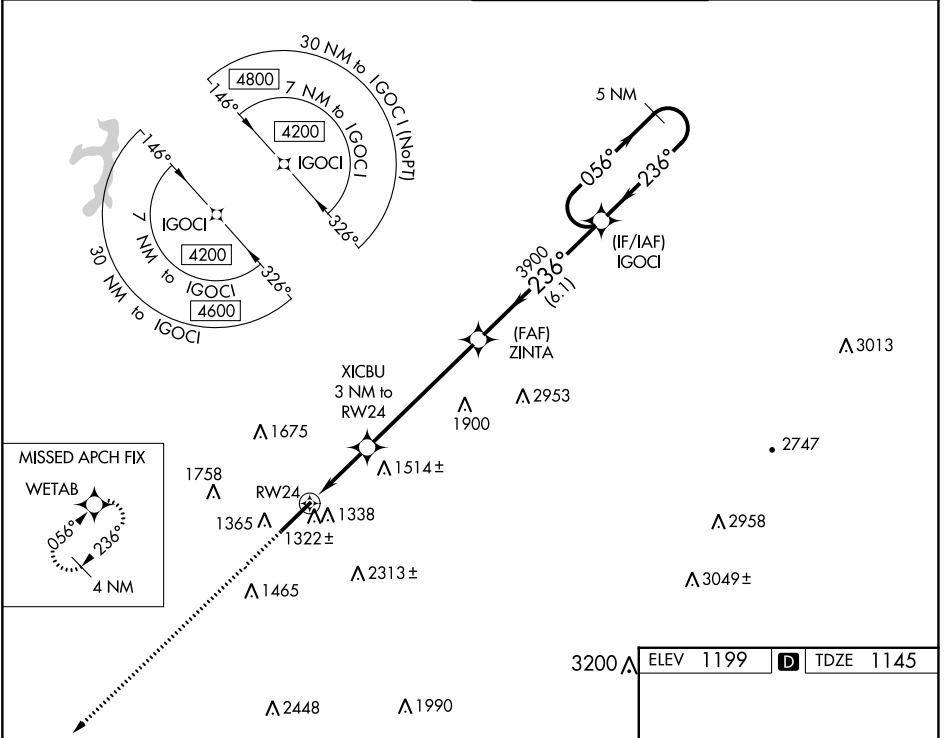
WAAS CH <b>70499</b> <b>W24A</b>	APP CRS <b>236°</b>	Rwy Idg TDZE <b>1145</b> Apt Elev <b>1199</b>	<b>7372</b>
--	------------------------	---	-------------

# RNAV (GPS) RWY 24

ARNOLD PALMER RGNL (L.B.E.)

<p>For uncompensated Baro-VNAV systems, LNAV/VNAV NA below -17°C (2°F) or above 54°C (130°F). Circling NA southeast of Rwy 6-24. DME/DME RNP-0.3 NA.</p>	<p>MALSR</p>	<p>MISSED APPROACH: Climb to 4200 direct WETAB and hold, continue climb-in-hold to 4200.</p>

<p>ATIS <b>118.375</b></p>	<p>JOHNSTOWN APP CON* <b>121.2 299.2</b></p>	<p>PALMER TOWER* <b>125.0 (CTAF) 0</b></p>	<p>GND CON <b>121.8</b></p>
--------------------------------	--	--	---------------------------------



4200	WETAB	5 NM Holding Pattern	
*LNAV only.		ZINTA	IGOCI
		XICBU 3 NM to RWY 24	3900
		RWY 24	236°
			056°
			236°
			4200
			GP 3.00° TCH 55
			*2140
			3900
			1.2
			1.8 NM
			5.5 NM
			6.1 NM
CATEGORY	A	B	C
LPV DA		1345 - 1/2	200 (200-1/2)
LNAV/VNAV DA		1498 - 3/4	353 (300-3/4)
LNAV MDA	1580 - 1/2	435 (400-1/2)	1580 - 3/4 435 (400-3/4)
CIRCLING	1740 - 1 541 (600-1)	1780 - 1 581 (600-1)	2060 - 2 1/2 861 (900-2 1/2) 2060 - 2 3/4 861 (900-2 3/4)

