

WAAS CH <b>70539</b> W06A	APP CRS <b>056°</b>	Rwy Idg <b>8222</b> TDZE <b>1199</b> Apt Elev <b>1199</b>
---------------------------------	------------------------	---

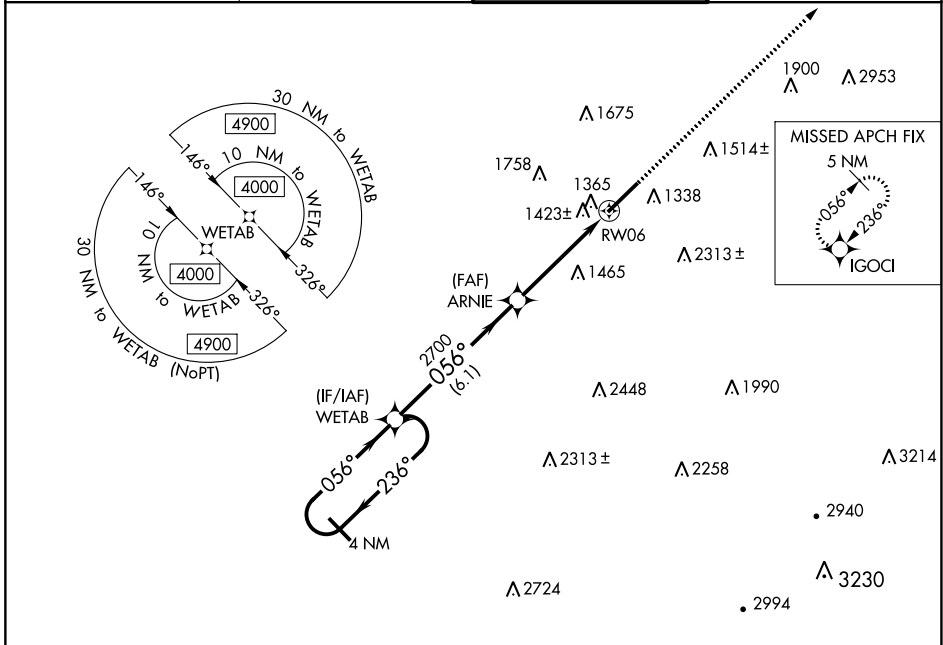
# RNAV (GPS) RWY 6

ARNOLD PALMER RGNL (L.B.E.)

**⚠** For uncompensated Baro-VNAV systems, LNAV/VNAV NA below -17°C (2°F) or above 54°C (130°F). Circling NA southeast of Rwy 6-24.  
Rwy 6 helicopter visibility reduction below 3/4 SM NA. DME/DME RNP-0.3 NA.

**MISSED APPROACH:**  
Climb to 4200 direct IGOCI and hold.

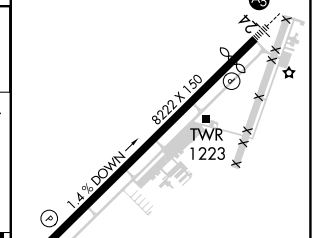
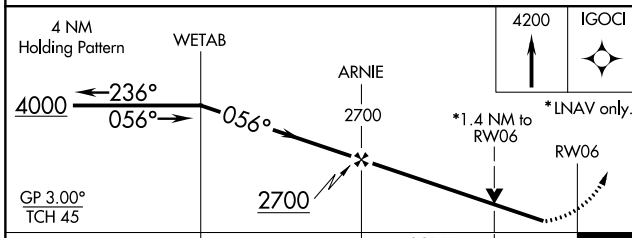
ATIS <b>118.375</b>	JOHNSTOWN APP CON ★ <b>121.2 299.2</b>	PALMER TOWER ★ <b>125.0 (CTAF) 0</b>	GND CON <b>121.8</b>
------------------------	---	---	-------------------------



NE-4, 16 MAY 2024 to 13 JUN 2024

NE-4, 16 MAY 2024 to 13 JUN 2024

ELEV 1199	<b>D</b> TDZE 1199
-----------	--------------------



CATEGORY	A	B	C	D
LPV DA		1449-3/4	250 (300-3/4)	
LNAV/VNAV DA		1716-13/4	517 (600-13/4)	
LNAV MDA	1680-1	481 (500-1)	1680-13/8	481 (500-13/8)
<b>C</b> CIRCLING	1740-1 541 (600-1)	1780-1 581 (600-1)	2060-21/2 861 (900-21/2)	2060-23/4 861 (900-23/4)

REIL Rwy 6 **0**  
HIRL Rwy 6-24 **0**