

WAAS CH <b>93619</b> W17A	APP CRS <b>175°</b>	Rwy Idg <b>6325</b> TDZE <b>1114</b> Apt Elev <b>1114</b>
---------------------------------	------------------------	---

# RNAV (GPS) RWY 17

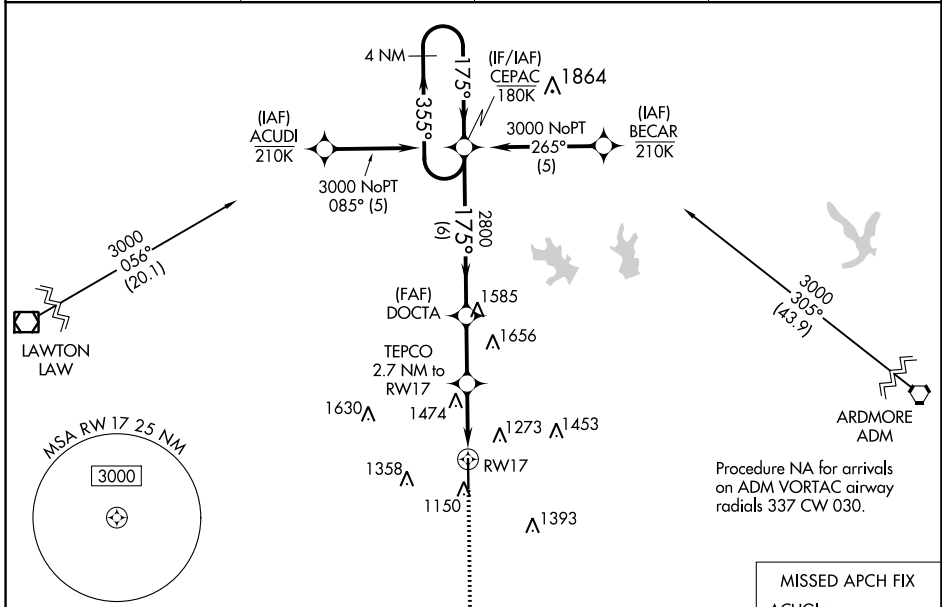
HALLIBURTON FLD (DUC)

RNP APCH. ODALS

For uncompensated Baro-VNAV systems, LNAV/VNAV NA below -17°C or above 54°C. Inop table does not apply to LPV all Cats, LNAV/VNAV all Cats, LNAV Cats C/D.

MISSED APPROACH:  
Climb to 3000 direct ACUGI and hold.

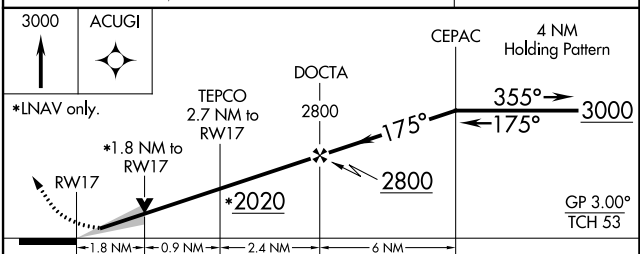
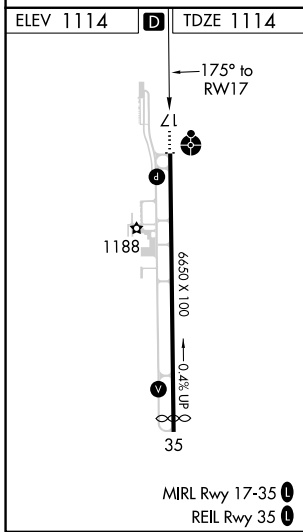
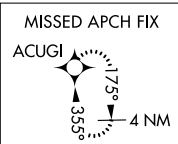
AWOS-3 <b>119.075</b>	FORT SILL APP CON <b>118.6 290.375</b>	CLNC DEL <b>118.4</b>	UNICOM <b>122.8 (CTAF) 0</b>
--------------------------	---	--------------------------	---------------------------------



SC-1, 16 MAY 2024 to 13 JUN 2024

SC-1, 16 MAY 2024 to 13 JUN 2024

Procedure NA for arrivals on ADM VORTAC airway radials 337 CW 030.



CATEGORY	A	B	C	D
LPV DA		1314-3/4	200 (200-3/4)	
LNAV/VNAV DA		1806-2 1/2	692 (700-2 1/2)	
LNAV MDA	1740-3/4	626 (700-3/4)	1740-1 3/4	626 (700-1 3/4)
<b>C</b> CIRCLING	1740-1	626 (700-1)	1780-1 3/4	1780-2
			666 (700-1 3/4)	666 (700-2)