

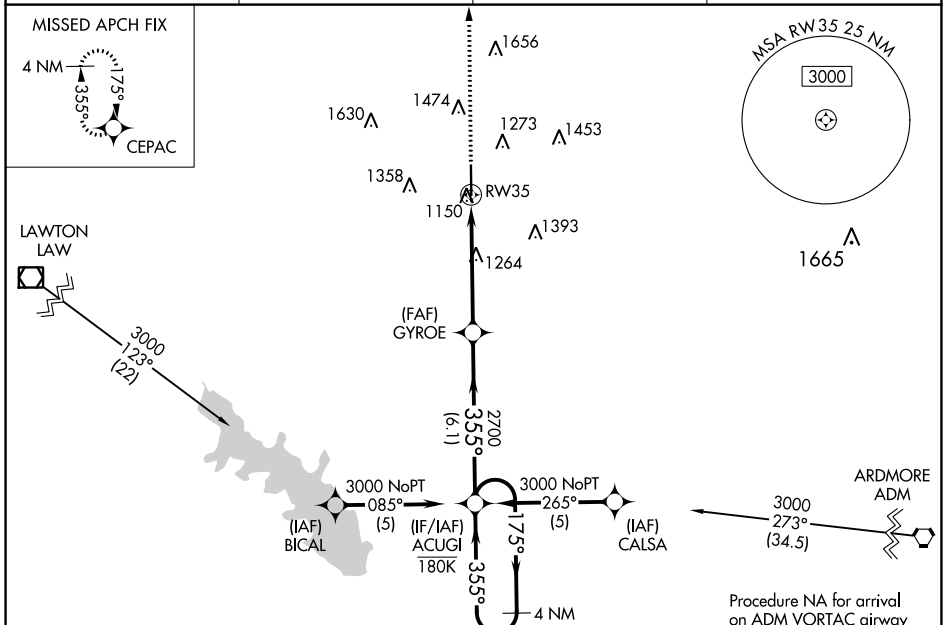
WAAS CH <b>40241</b> <b>W35A</b>	APP CRS <b>355°</b>	Rwy Idg TDZE <b>1094</b> Apt Elev <b>1114</b>
--	------------------------	---

# RNAV (GPS) RWY 35

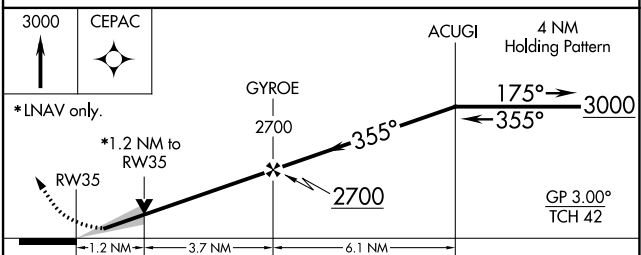
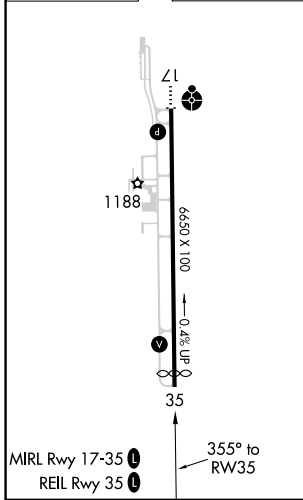
HALLIBURTON FLD (DUC)

RNP APCH. ▼ For uncompensated Baro-VNAV systems, LNAV/VNAV NA below -17°C or above 54°C.	MISSED APPROACH: Climb to 3000 direct CEPAC and hold.
---	---

AWOS-3 <b>119.075</b>	FORT SILL APP CON <b>118.6 290.375</b>	CLNC DEL <b>118.4</b>	UNICOM <b>122.8 (CTAF)</b>
--------------------------	---	--------------------------	-------------------------------



ELEV 1114	<b>D</b>	TDZE 1094
-----------	----------	-----------



CATEGORY	A	B	C	D
LPV DA		1294- <sup>3</sup> / <sub>4</sub>	200 (200- <sup>3</sup> / <sub>4</sub> )	
LNAV/VNAV DA		1397- <sup>7</sup> / <sub>8</sub>	303 (300- <sup>7</sup> / <sub>8</sub> )	
LNAV MDA	1520-1	426 (500-1)	1520-1 <sup>1</sup> / <sub>4</sub>	426 (500-1 <sup>1</sup> / <sub>4</sub> )
<b>C</b> CIRCLING	1560-1 446 (500-1)	1580-1 466 (500-1)	1780-1 <sup>3</sup> / <sub>4</sub> 666 (700-1 <sup>3</sup> / <sub>4</sub> )	1780-2 666 (700-2)

SC-1, 16 MAY 2024 to 13 JUN 2024

SC-1, 16 MAY 2024 to 13 JUN 2024