

VOR/DME OBK 113.0 Chan 77	APP CRS 269°	Rwy Idg TDZE Apt Elev	3800 887 887
--	------------------------	-----------------------------	---

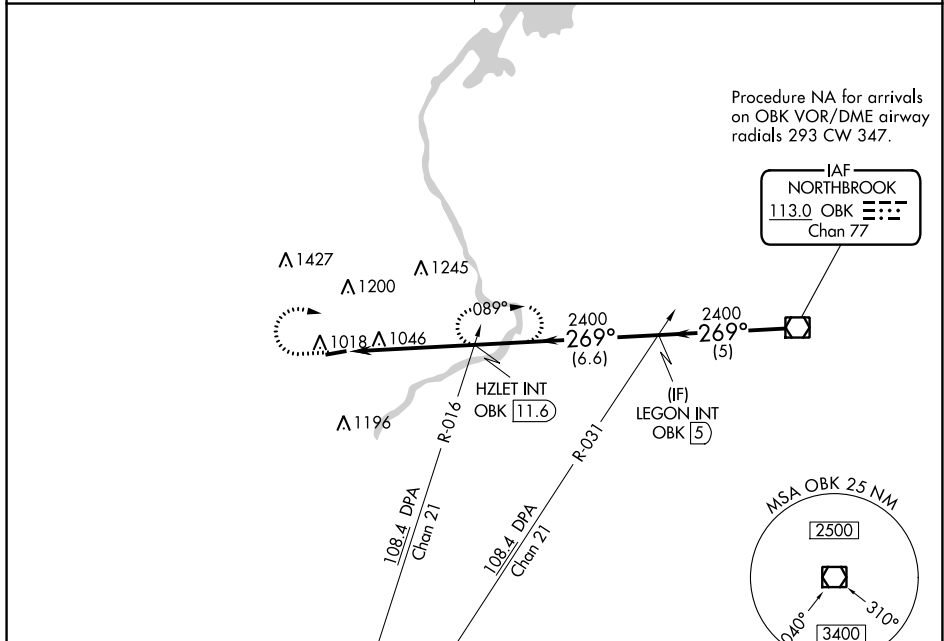
VOR RWY 26

LAKE IN THE HILLS (3CK)

▽ Rwy 26 helicopter visibility reduction below 1 SM NA. Obtain local altimeter setting on CTAF; when not received, use Chicago DuPage altimeter setting.

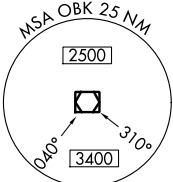
△ NA MISSED APPROACH: Climb to 1900, then climbing right turn to 2500 on heading 130° and OBK VOR/DME R-269 to HZLET INT/OBK 11.6 DME and hold.

CHICAGO APP CON 120.55 306.925	UNICOM 123.05 (CTAF) 0
--	----------------------------------

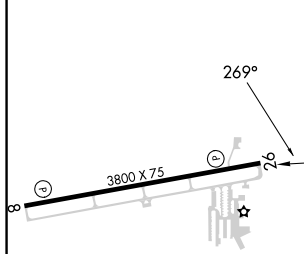


Procedure NA for arrivals on OBK VOR/DME airway radials 293 CW 347.

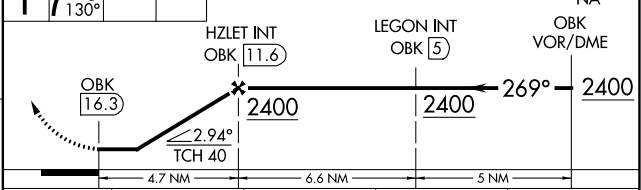
IAF NORTHBROOK
113.0 OBK Chan 77



ELEV 887	TDZE 887
----------	----------



△1468
VGSi and descent angles not coincident (VGSi Angle 3.00/TCH 20). Procedure Turn NA



CATEGORY	A	B	C	D
S-26	1380-1	493 (500-1)	1380-1 ³ / ₈ 493 (500-1 ³ / ₈)	NA
CIRCLING	1380-1	493 (500-1)	1620-2 733 (800-2)	NA

LIRL Rwy 8-26 **0**

FAF to MAP 4.7 NM

Knots	60	90	120	150	180
Min:Sec	4:42	3:08	2:21	1:53	1:34

CHICAGO DUPAGE ALTIMETER SETTING

S-26	1440-1	553 (600-1)	1440-1 ⁵ / ₈ 553 (600-1 ⁵ / ₈)	NA
CIRCLING	1440-1	553 (600-1)	1680-2 ¹ / ₄ 793 (800-2 ¹ / ₄)	NA

EC-3, 16 MAY 2024 to 13 JUN 2024

EC-3, 16 MAY 2024 to 13 JUN 2024