

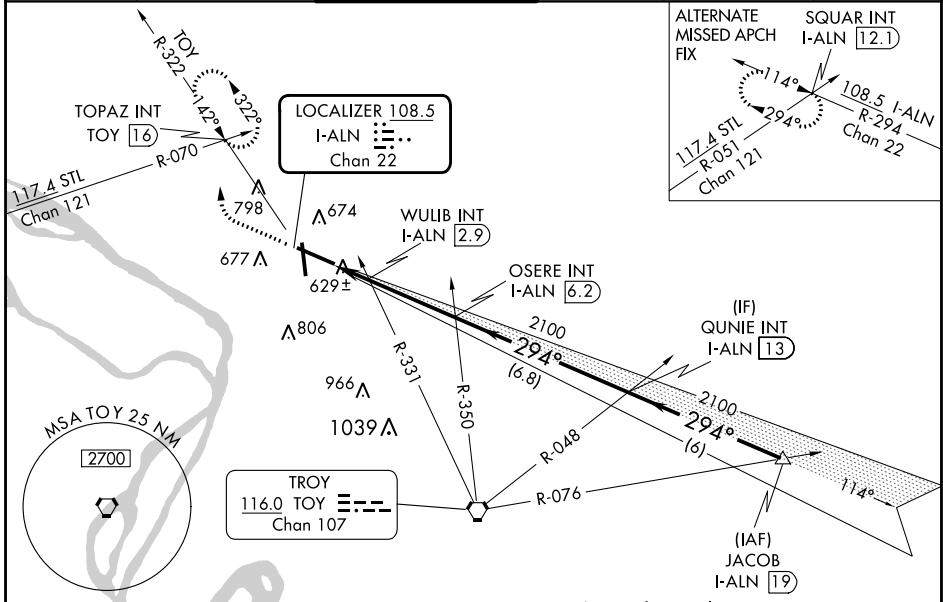
LOC/DME I-ALN 108.5 Chan 22	APP CRS 294°	Rwy Idg TDZE Apt Elev	8099 531 544
-------------------------------------------------	------------------------	-----------------------------	-----------------------------------------

ILS or LOC RWY 29

ST LOUIS RGNL (ALN)

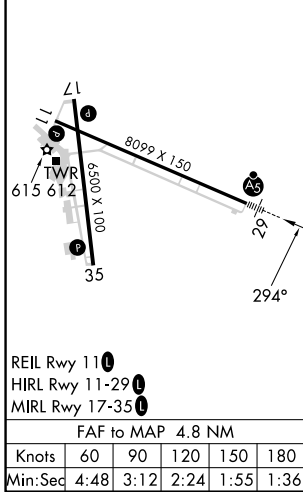
<p>For inop ALS, increase WULIB fix minimums S-LOC 29 Cats C/D visibility to 1 SM.</p>	<p>MALS R</p>	<p>MISSED APPROACH: Climb to 1000 then climbing right turn to 2200 on heading 310° and on TOY VORTAC R-322 to TOPAZ INT/TOY 16 DME and hold.</p>			
			<p>ATIS 128.0</p>	<p>ST LOUIS APP CON 124.2 353.9</p>	<p>REGIONAL TOWER* 126.0 (CTAF) 0 239.0</p>

ATIS 128.0	ST LOUIS APP CON 124.2 353.9	REGIONAL TOWER* 126.0 (CTAF) 0 239.0	GND CON 120.2	CLNC DEL 120.2 (when tower closed)	UNICOM 122.95
-------------------	-------------------------------------	---------------------------------------------	----------------------	----------------------------------------------	----------------------



ELEV 544	D	TDZE 531
-----------------	----------	-----------------

Procedure NA for arrivals at JACOB on V12 northeast bound.



	1000	2200	TOY R-322	TOPAZ INT	*LOC only.	OSERE INT I-ALN 6.2	QUNIE INT I-ALN 13	JACOB I-ALN 19	
		hdg 310°				2100	2100	2100	GS 3.00° TCH 55
						*980			
						1.4 NM	3.3 NM	6.8 NM	6 NM
CATEGORY						A	B	C	D
S-ILS 29						731-1/2 200 (200-1/2)			
S-LOC 29						980-1/2 449 (500-1/2)	980-7/8 449 (500-7/8)		
CIRCLING						1000-1 456 (500-1)	1160-13/4 616 (700-13/4)	1200-2 656 (700-2)	
WULIB FIX MINIMUMS (DUAL VOR RECEIVERS OR DME REQUIRED)									
S-LOC 29						880-1/2 349 (400-1/2)	880-5/8 349 (400-5/8)		
CIRCLING						1000-1 456 (500-1)	1160-13/4 616 (700-13/4)	1200-2 656 (700-2)	

EC-3, 16 MAY 2024 to 13 JUN 2024

EC-3, 16 MAY 2024 to 13 JUN 2024