

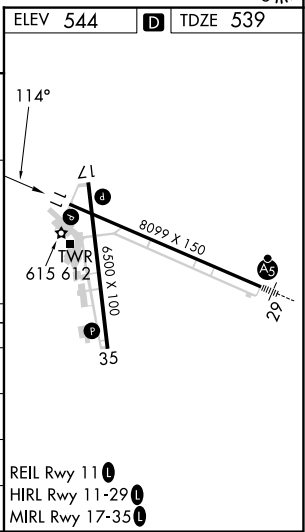
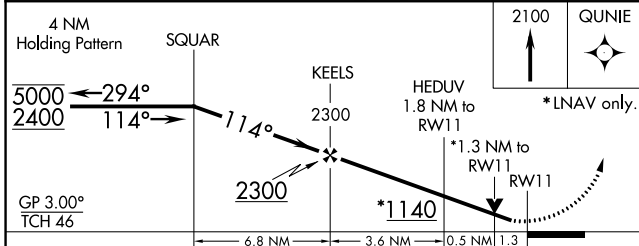
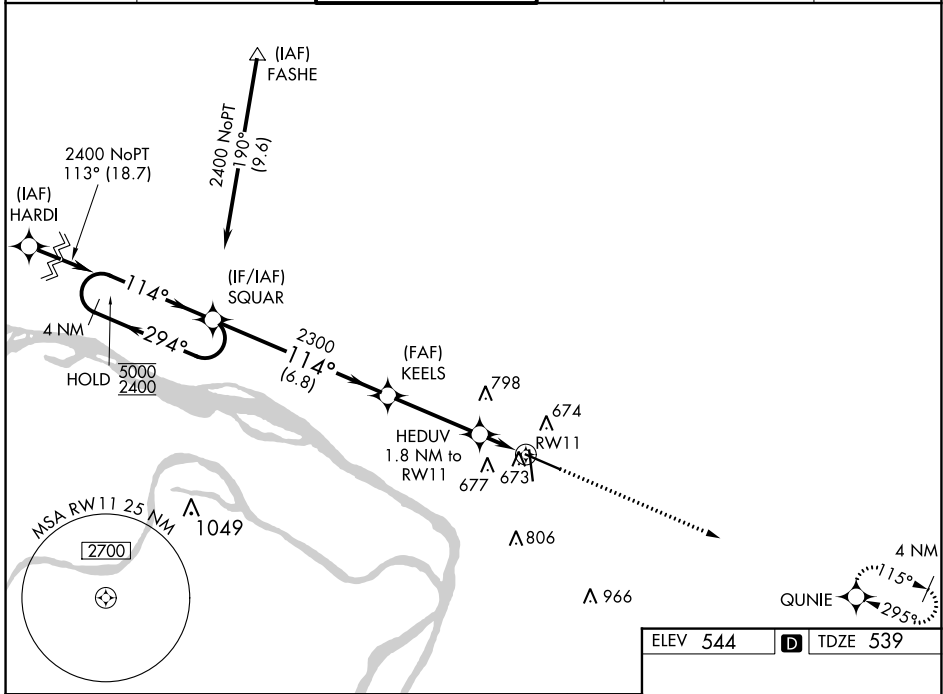
WAAS CH <b>90417</b> <b>W11A</b>	APP CRS <b>114°</b>	Rwy Idg TDZE <b>539</b> Apt Elev <b>544</b>	<b>8099</b>
--	------------------------	---	-------------

# RNAV (GPS) RWY 11

ST LOUIS RGNL (A.L.N)

RNP APCH.		MISSED APPROACH: Climb to 2100 direct QUNIE and hold.
<p><b>▼</b> Rwy 11 helicopter visibility reduction below ¼ SM NA.  <b>▲</b> For uncompensated Baro-VNAV systems, LNAV/VNAV NA below -16°C or above 54°C.</p>		

ATIS <b>128.0</b>	ST LOUIS APP CON <b>124.2 353.9</b>	REGIONAL TOWER* <b>126.0(CTAF) 239.0</b>	GND CON <b>120.2</b>	CLNC DEL <b>120.2</b> (when tower closed)	UNICOM <b>122.95</b>
----------------------	--	---	-------------------------	---	-------------------------



CATEGORY	A	B	C	D
LPV DA		794-7/8	255 (300-7/8)	
LNAV/VNAV DA		881-1 1/8	342 (400-1 1/8)	
LNAV MDA	980-1	441 (500-1)	980-1 3/8	441 (500-1 3/8)
CIRCLING	1000-1	456 (500-1)	1160-1 3/4	1200-2
			616 (700-1 3/4)	656 (700-2)

EC-3, 16 MAY 2024 to 13 JUN 2024

EC-3, 16 MAY 2024 to 13 JUN 2024