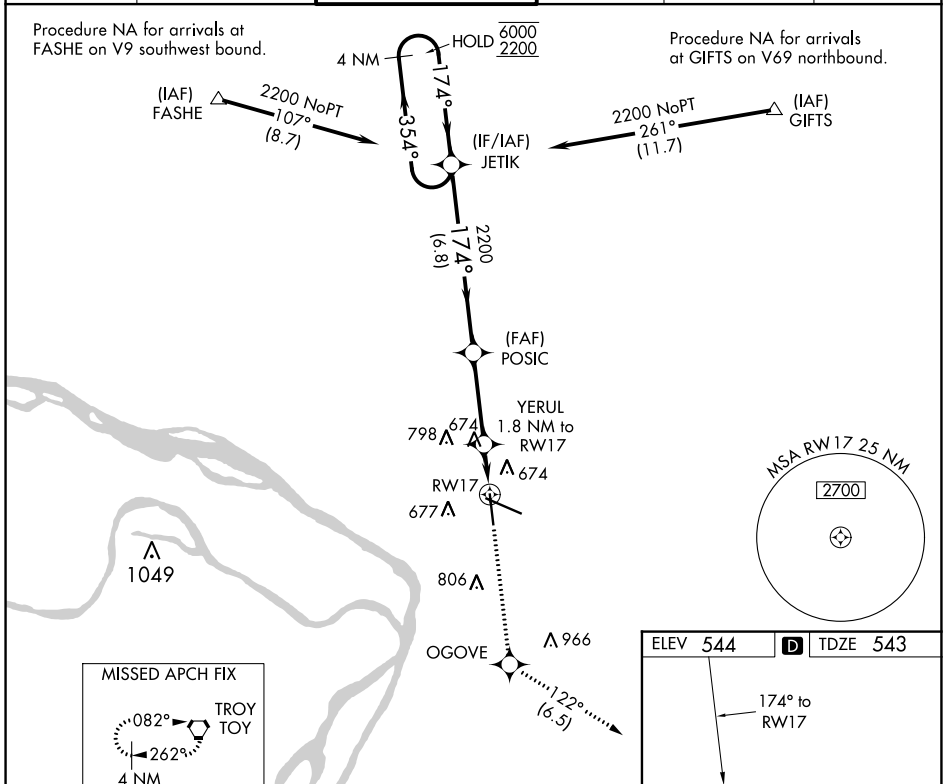


APP CRS 174°	Rwy Idg 6500
	TDZE 543
	Apt Elev 544

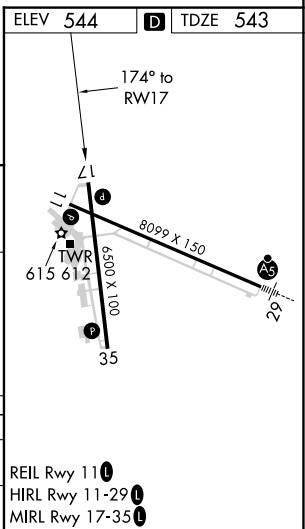
RNAV (GPS) RWY 17

ST LOUIS RGNL (ALN)

RNP APCH.		MISSED APPROACH: Climb to 3000 direct OGOVE and on track 122° to TOY VORTAC and hold.	
Rwy 17 helicopter visibility reduction below 3/4 SM NA.			
ATIS 128.0	ST LOUIS APP CON 124.2 353.9	REGIONAL TOWER* 126.0 (CTAF) 0 239.0	GND CON 120.2
		CLNC DEL 120.2 (when tower closed)	UNICOM 122.95



4 NM Holding Pattern	3000	OGOVE	tr 122°	TOY
JETIK	POSIC	YERUL 1.8 NM to RWY 17	1.1 NM to RWY 17	RWY 17
6000 ← 354°	174° → 2200	3.00° TCH 43	1140	
6.8 NM		3.3 NM		0.7 NM 1.1 NM
CATEGORY	A	B	C	D
RNAV MDA	940-1 397 (400-1)		940-1 1/8 397 (400-1 1/8)	
CIRCLING	1000-1 456 (500-1)		1160-1 3/4 616 (700-1 3/4) 1200-2 656 (700-2)	



EC-3, 16 MAY 2024 to 13 JUN 2024

EC-3, 16 MAY 2024 to 13 JUN 2024