

LOC/DME I-GKY 111.55 Chan 52 (Y)	APP CRS 342°	Rwy Idg TDZE Apt Elev 6080 620 628
---	------------------------	--

ILS or LOC/DME RWY 34

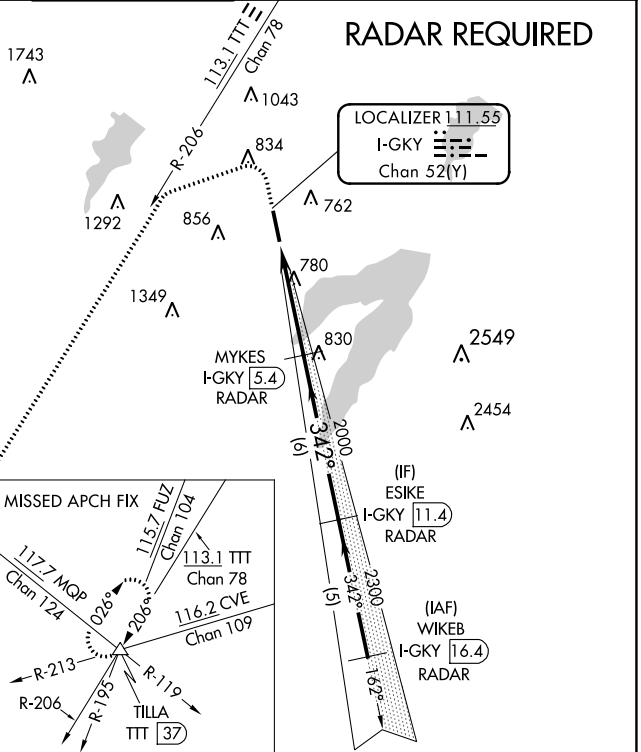
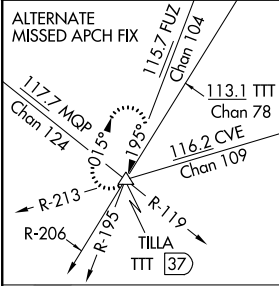
ARLINGTON MUNI (GKY)

When local altimeter setting not received, use Grand Prairie Muni altimeter setting. Inop table does not apply to S-ILS 34.
 For inop MALSRS increase S-LOC 34 Cat A, B visibility to 1 mile.



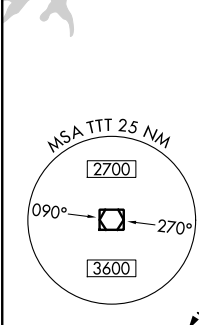
MISSED APPROACH: Climb to 1100 then climbing left turn to 3000 via heading 245° and TTT VOR/DME R-206 to TILLA INT/TTT 37 DME and hold.

ASOS 127.375	REGIONAL APP CON 135.975 379.9	ARLINGTON TOWER ★ 128.625 (CTAF)	GND CON 121.875	CLNC DEL 121.875	CLNC DEL 118.85 (When twr closed)
------------------------	--	--	---------------------------	----------------------------	--

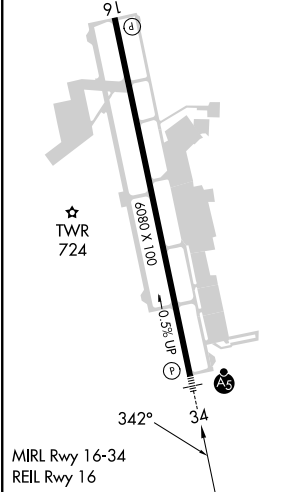


RADAR REQUIRED

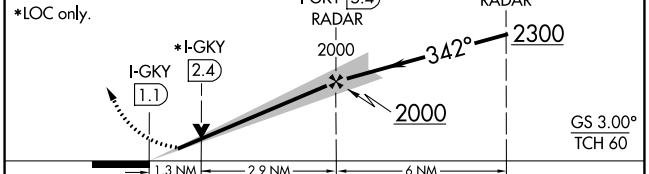
LOCALIZER **111.55**
 I-GKY
 Chan 52(Y)



ELEV 628	TDZE 620
----------	----------



1100 ↑	3000 hdg 245°	TTT R-206	TILLA △	VGSI and ILS glidepath not coincident (VGSI Angle 3.00°/TCH 55).	ESIKE I-GKY 11.4 RADAR
-----------	---------------------	--------------	------------	---	------------------------------



CATEGORY	A	B	C	D
S-ILS 34		820-¾	200 (200-¾)	NA
S-LOC 34		1060-¾	440 (500-¾)	NA
CIRCLING	1100-1 472 (500-1)	1140-1 512 (600-1)	1220-1½ 592 (600-1½)	NA

SC-2, 16 MAY 2024 to 13 JUN 2024

SC-2, 16 MAY 2024 to 13 JUN 2024