

KINGDOM FOUR DEPARTURE

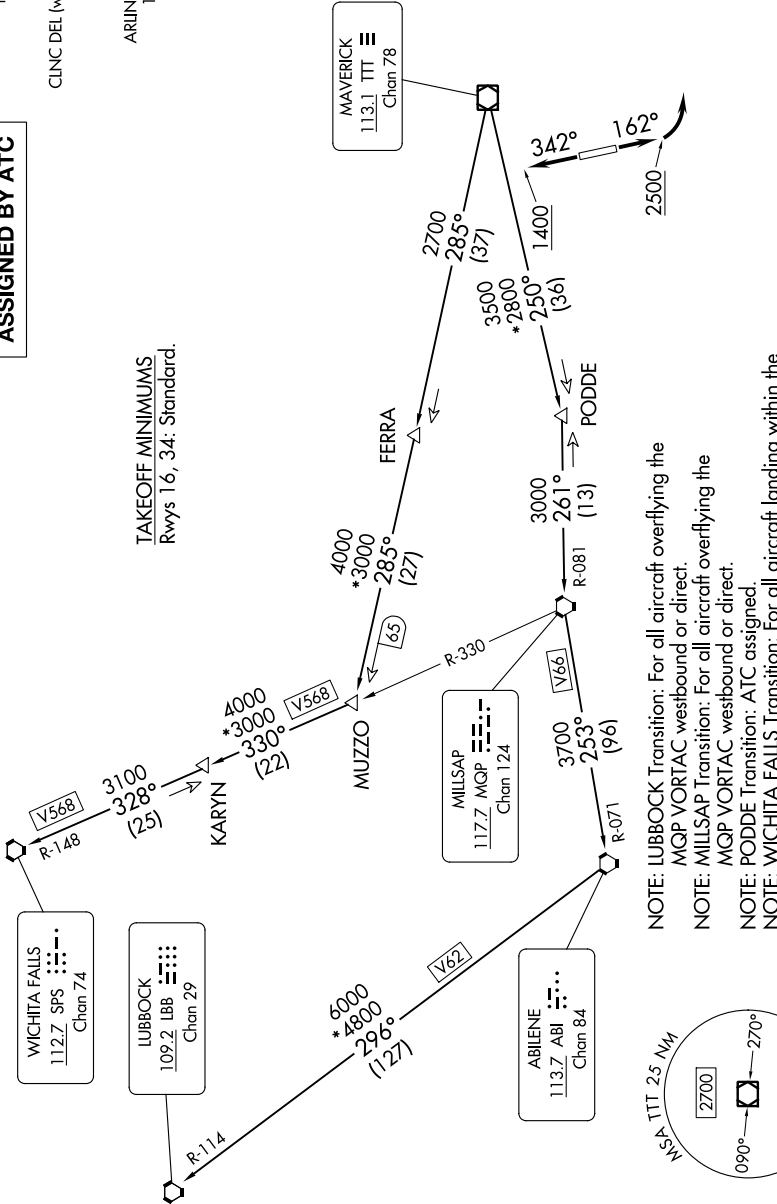
SC-2, 16 MAY 2024 to 13 JUN 2024

RADAR and DME required.

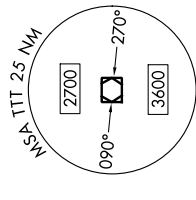
**TOP ALTITUDE:
ASSIGNED BY ATC**

REGIONAL DEP CON
135.975 379.9
CLNC DEL
121.875
CLNC DEL (when hwr closed)
118.85
GND CON
121.875
ARLINGTON TOWER *
128.625 (CTAF)

TAKEOFF MINIMUMS
Rwys 16, 34: Standard.



- NOTE: LUBBOCK Transition: For all aircraft overlying the MQP VORTAC westbound or direct.
- NOTE: MILLSAP Transition: For all aircraft overlying the MQP VORTAC westbound or direct.
- NOTE: PODDE Transition: ATC assigned.
- NOTE: WICHITA FALLS Transition: For all aircraft landing within the Wichita Falls terminal area or overlying the SPS VORTAC.
- NOTE: For all aircraft requesting 17000 and below.



(CONTINUED ON FOLLOWING PAGE)

NOTE: Chart not to scale.

SC-2, 16 MAY 2024 to 13 JUN 2024

KINGDOM FOUR DEPARTURE