

(NANDR2.NANDR) 23110

AL-5189 (FAA)

ARLINGTON MUNI (GKY)

NANDR TWO DEPARTURE (RNAV)

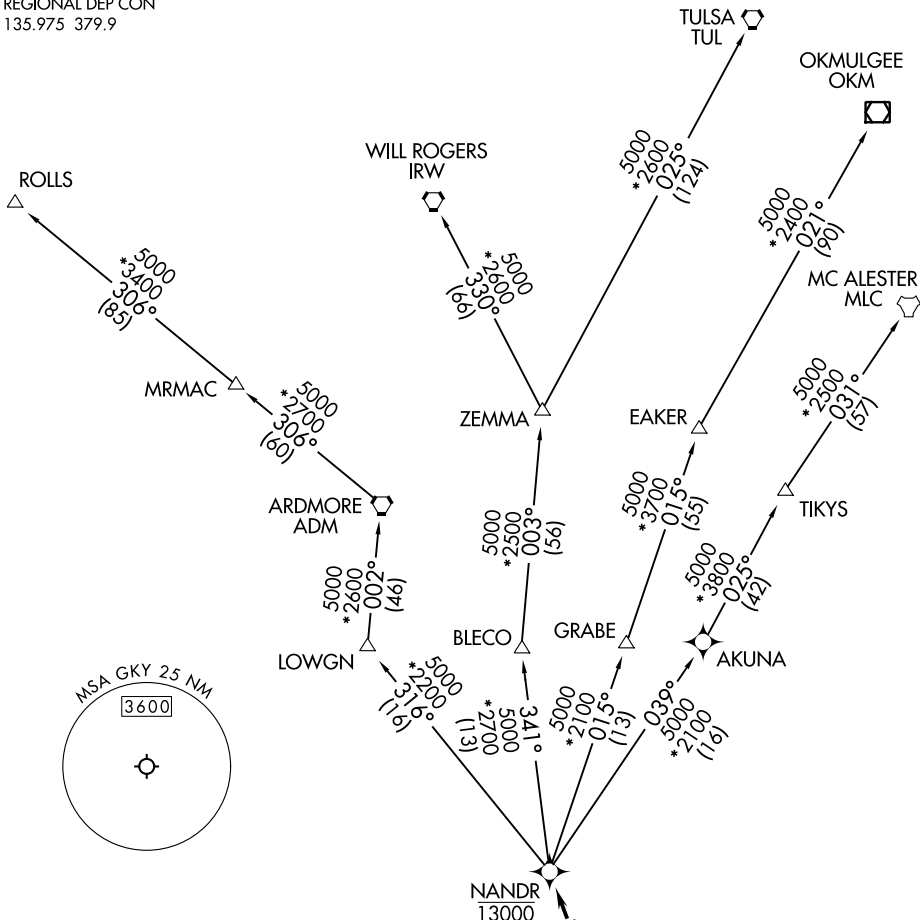
ARLINGTON, TEXAS

CLNC DEL 121.875
 CLNC DEL (when twr closed)
 118.85
 GND CON 121.875
 REGIONAL DEP CON
 135.975 379.9

RNAV 1 - DME/DME/IRU or GPS.

RADAR required.

**TOP ALTITUDE:
ASSIGNED BY ATC**



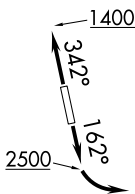
SC-2, 16 MAY 2024 to 13 JUN 2024

SC-2, 16 MAY 2024 to 13 JUN 2024

TAKEOFF MINIMUMS

Rwys 16, 34: Standard.

NOTE: EAKER transition: For TUL terminal arrivals only.
 NOTE: TULSA transition: For all aircraft overflying TUL VORTAC.
 NOTE: Aircraft arriving to the Oklahoma City terminal area,
 file and expect the ZEMMA enroute transition.



(NARRATIVE ON FOLLOWING PAGE)

NOTE: Chart not to scale

NANDR TWO DEPARTURE (RNAV)

(NANDR2.NANDR) 20APR23

ARLINGTON, TEXAS
ARLINGTON MUNI (GKY)