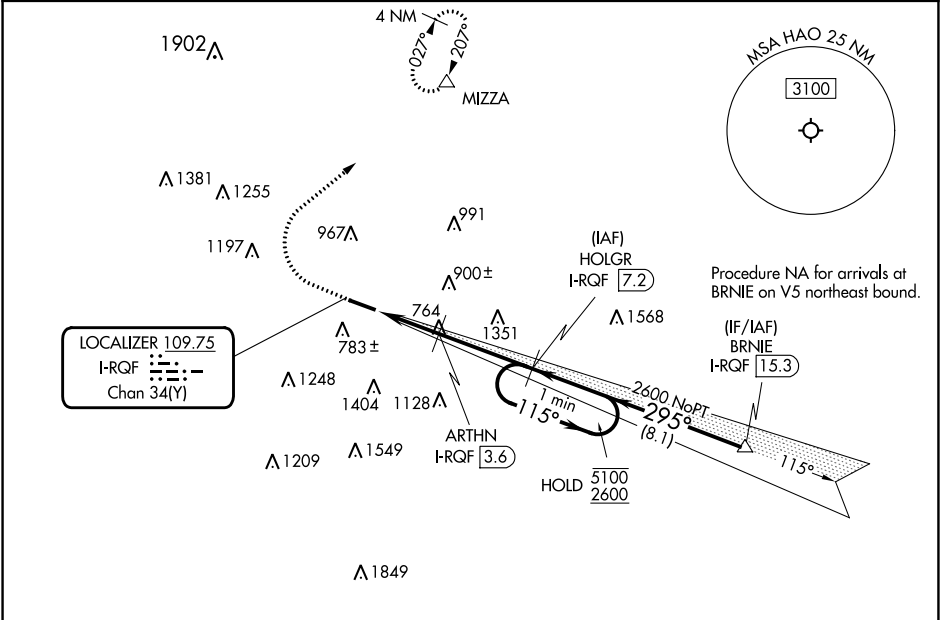


LOC/DME I-RQF 109.75 Chan 34 (Y)	APP CRS 295°	Rwy Idg TDZE Apt Elev	5500 619 632
--	------------------------	-----------------------------	---

ILS or LOC RWY 29

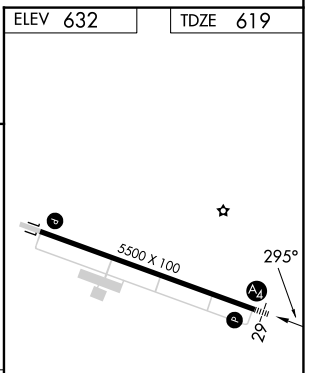
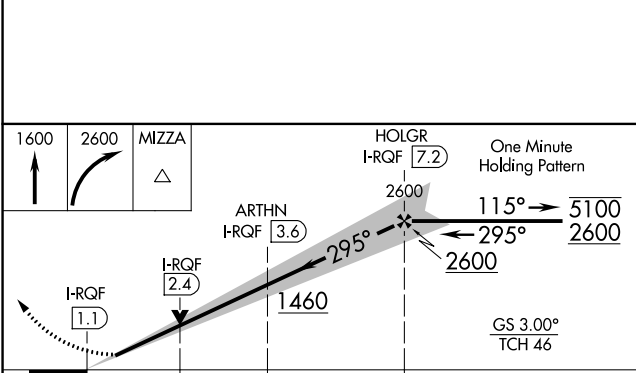
BUTLER COUNTY RGNL/HOGAN FLD (HAO)

RNP APCH - GPS DME required.		MALS	MISSED APPROACH: Climb to 1600 then climbing right turn to 2600 direct MIZZA and hold.
Inop table does not apply to S-ILS 29. 			
ASOS 121.425	CINCINNATI APP CON 121.0 254.25	CLNC DEL 126.25	UNICOM 123.05 (CTAF) 0



EC-2, 16 MAY 2024 to 13 JUN 2024

EC-2, 16 MAY 2024 to 13 JUN 2024



CATEGORY	A	B	C	D
S-ILS 29		819- ³ / ₄	200 (200- ³ / ₄)	
S-LOC 29	1080- ³ / ₄	461 (500- ³ / ₄)	1080-1 ¹ / ₈	461 (500-1 ¹ / ₈)
CIRCLING	1280-1	648 (700-1)	1300-1 ³ / ₄ 668 (700-1 ³ / ₄)	1760-3 1128 (1200-3)

MIRL Rwy 11-29	
REIL Rwys 11 and 29	
FAF to MAP 6.1 NM	
Knots	60 90 120 150 180
Min:Sec	6:06 4:04 3:03 2:26 2:02