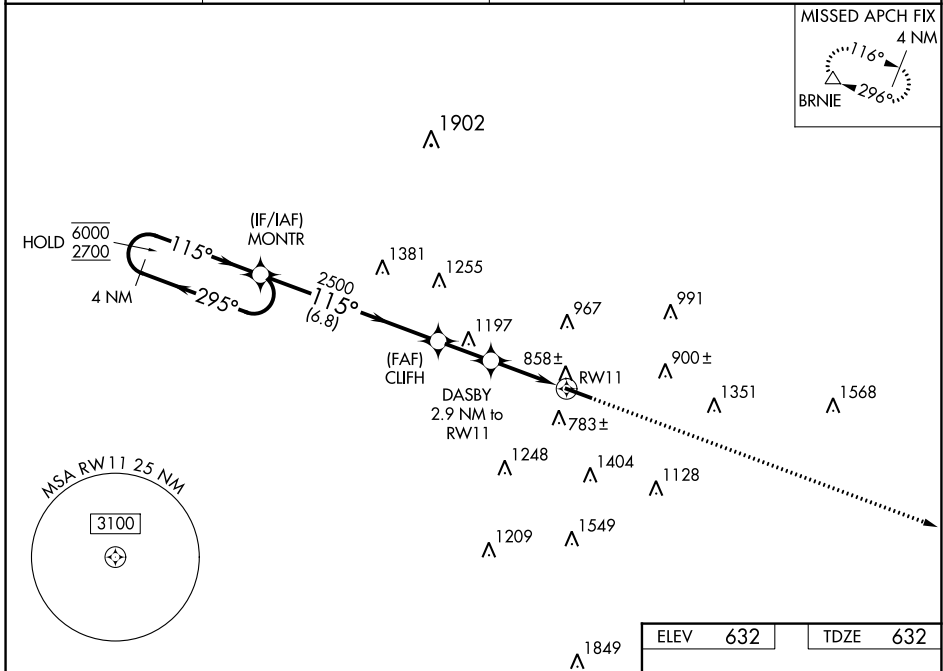


WAAS CH <b>56600</b> <b>W11A</b>	APP CRS <b>115°</b>	Rwy Idg TDZE Apt Elev	<b>5500</b> <b>632</b> <b>632</b>
--	------------------------	-----------------------------	---

# RNAV (GPS) RWY 11

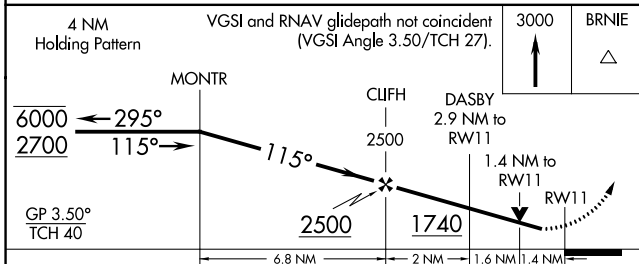
BUTLER COUNTY RGNL/HOGAN FLD (HAO)

RNP APCH - GPS.			MISSED APPROACH: Climb to 3000 direct BRNIE and hold.
ASOS <b>121.425</b>	CINCINNATI APP CON <b>121.0 254.25</b>	CLNC DEL <b>126.25</b>	UNICOM <b>123.05 (CTAF)</b>

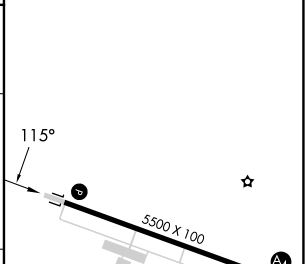


EC-2, 16 MAY 2024 to 13 JUN 2024

EC-2, 16 MAY 2024 to 13 JUN 2024



ELEV	632	TDZE	632
------	-----	------	-----



CATEGORY	A	B	C	D
LPV DA		1020-1 $\frac{1}{8}$	388 (400-1 $\frac{1}{8}$ )	
LNAV/VNAV DA		1108-1 $\frac{3}{8}$	476 (500-1 $\frac{3}{8}$ )	
LNAV MDA	1160-1	528 (600-1)	1160-1 $\frac{1}{2}$	528 (600-1 $\frac{1}{2}$ )
<b>C</b> CIRCLING	1280-1	648 (700-1)	1300-1 $\frac{3}{4}$ 668 (700-1 $\frac{3}{4}$ )	1760-3 1128 (1200-3)

MIRL Rwy 11-29	<b>1</b>
REIL Rwy 11 and 29	<b>1</b>