

WAAS CH 42616 W02A	APP CRS 022°	Rwy Idg TDZE Apt Elev	3501 696 699
--	------------------------	-----------------------------	---

RNAV (GPS) RWY 2

SOUTHBRIDGE MUNI (3B0)

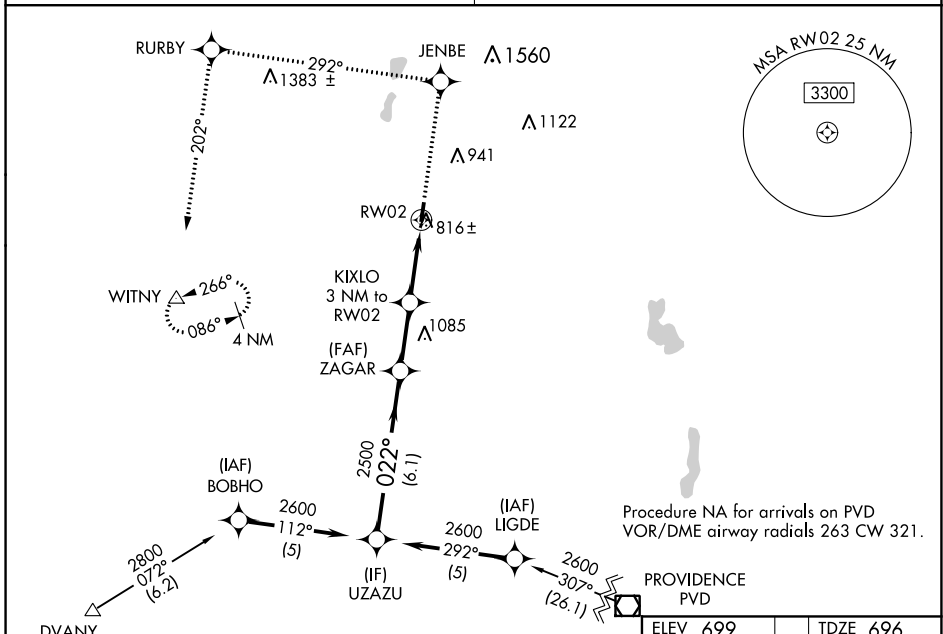
RNP APCH - GPS.

NA Circling Rwy 20 NA at night. Use Worcester Rgnl altimeter setting, when not received, use Windsor Locks altimeter setting: increase LPV DA to 1090 feet and all visibilities 1/8 SM. Increase all MDAs 80 feet and LNAV visibility Cat C 1/4 SM, and Circling visibility Cat C 1/2 SM.

MISSED APPROACH: Climb to 3000 direct JENBE and via track 292° to RURBY and via track 292° to WITNY and hold.

BRADLEY APP CON **119.0 327.1**

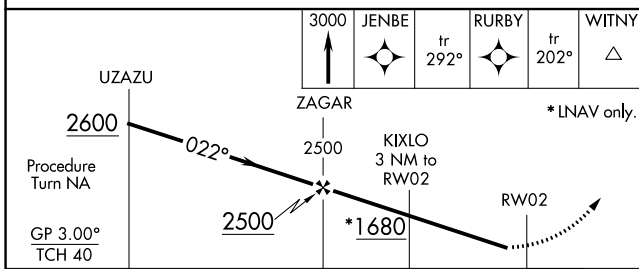
UNICOM **122.8 (CTAF)**



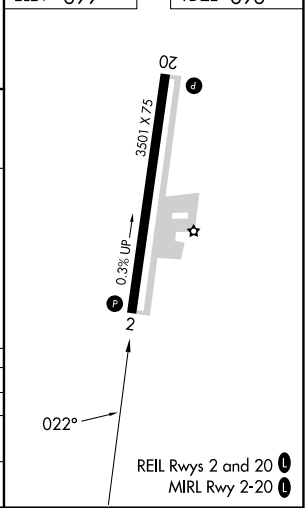
ELEV 699 TDZE 696

Procedure NA for arrivals at DVANY on V229 and V1 southwest bound.

Procedure NA for arrivals on PVD VOR/DME airway radials 263 CW 321.



CATEGORY	A	B	C	D
LPV DA	1018-1		322 (400-1)	NA
LNAV MDA	1300-1 604 (700-1)		1300-1 3/4 604 (700-1 3/4)	NA
C CIRCLING	1360-1 661 (700-1)		1360-1 3/4 661 (700-1 3/4)	NA



NE-1, 16 MAY 2024 to 13 JUN 2024

NE-1, 16 MAY 2024 to 13 JUN 2024