

WAAS CH <b>40229</b> <b>W17A</b>	APP CRS <b>166°</b>	Rwy Idg TDZE Apt Elev	<b>4280</b> <b>184</b> <b>184</b>
--	------------------------	-----------------------------	---

# RNAV (GPS) RWY 17

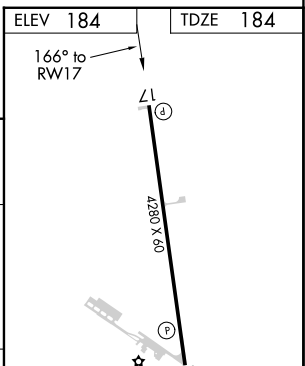
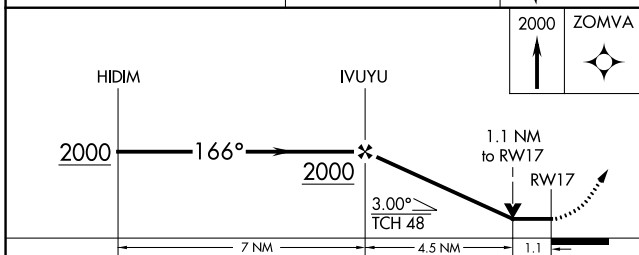
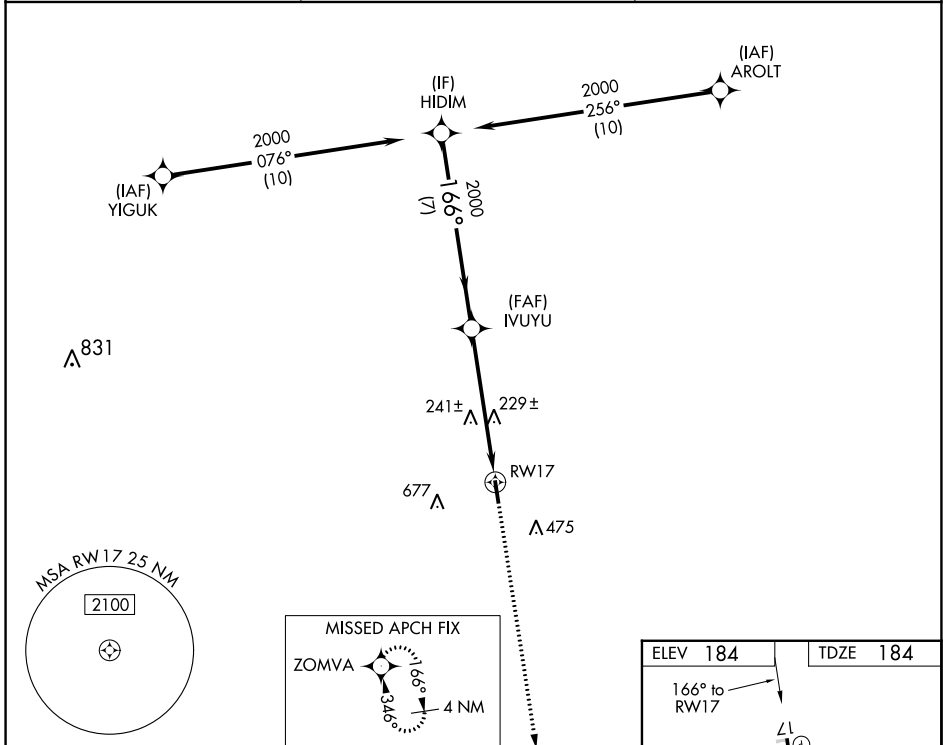
EAGLE LAKE (ELA)

RNP APCH-GPS.

▼ Rwy 17 helicopter visibility reduction below 3/4 SM NA. Circling Rwy 35 NA at night. When local altimeter setting not received, use Wharton altimeter setting and increase all MDA 80 feet, increase LP, LNAV and Circling Cat C visibility 1/4 SM. VDP NA when using Wharton altimeter setting.

▲ MISSED APPROACH: Climb to 2000 direct ZOMVA and hold.

AWOS-3PT <b>128.475</b>	HOUSTON APP CON <b>124.225 306.975</b>	CTAF <b>122.9 0</b>
----------------------------	---	------------------------



CATEGORY	A	B	C	D
LP MDA	580-1	396 (400-1)	580-1 1/8 396 (400-1 1/8)	NA
LNAV MDA	600-1	416 (500-1)	600-1 1/8 416 (500-1 1/8)	NA
CIRCLING	860-1	676 (700-1)	1040-2 1/2 856 (900-2 1/2)	NA

MIRL Rwy 17-35 0

SC-5, 16 MAY 2024 to 13 JUN 2024

SC-5, 16 MAY 2024 to 13 JUN 2024