

LOC/DME I-CCR <b>108.5</b> Chan 22	APP CRS <b>185°</b>	Rwy Ldg TDZE Apt Elev	<b>4400</b> <b>22</b> <b>26</b>
--	------------------------	-----------------------------	---------------------------------------


# LDA RWY 19R

BUCHANAN FLD (CCR)

**DME required.**

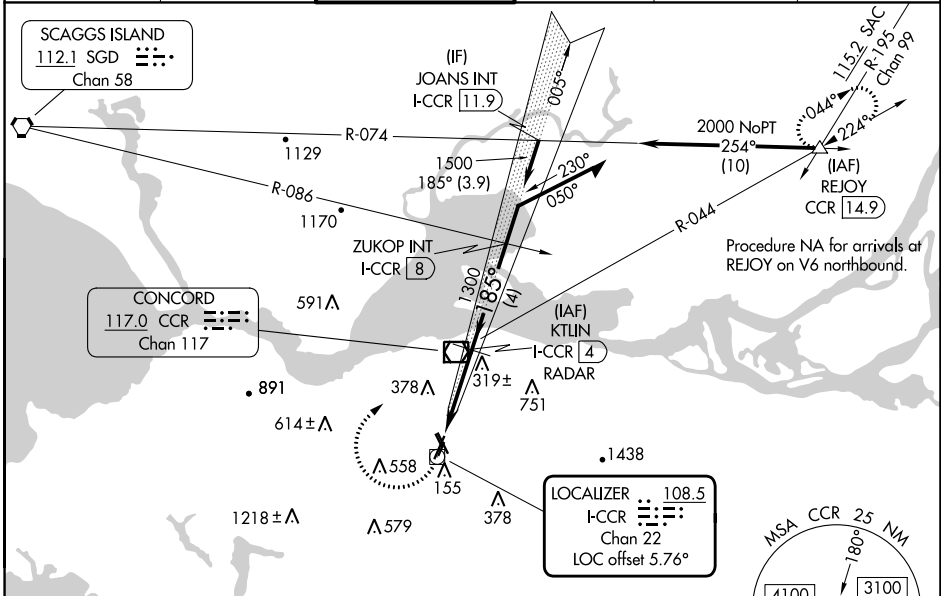
**▼** Circling NA west of Rwy 1L-19R. Circling Rwy 1L, 1R, 19L, 32L, 32R

**▲** NA at night. Rwy 19R helicopter visibility reduction below 3/4 SM NA. For inop ALS, increase S-19R Cats C/D visibility to 2 SM. \*For inop ALS, increase S-19R Cats C/D visibility to 1 1/2 SM.

**MALS** 

**MISSED APPROACH:** Climbing right turn to 3000 direct CCR VOR/DME then on CCR VOR/DME R-044 to REJOY/CCR 14.9 DME and hold. \*Missed approach requires minimum climb of 282 feet per NM to 1800.

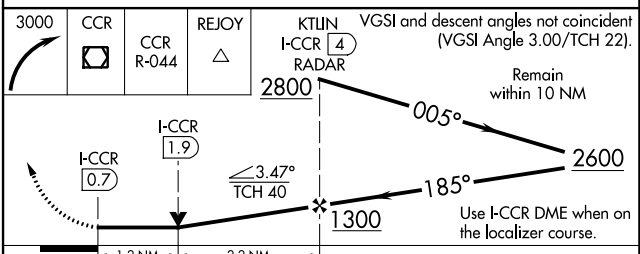
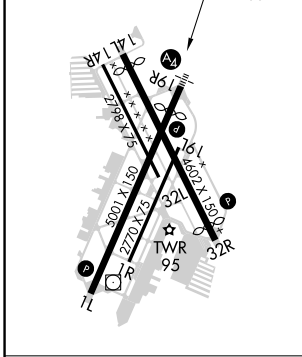
ATIS <b>124.7</b>	TRAVIS APP CON <b>119.9 322.325</b>	CONCORD TOWER* <b>119.7 (CTAF) 257.8</b>	GND CON <b>121.9</b>	CLNC DEL <b>118.75</b>	UNICOM <b>122.95</b>
----------------------	--	---	-------------------------	---------------------------	-------------------------



SW-2, 16 MAY 2024 to 13 JUN 2024

SW-2, 16 MAY 2024 to 13 JUN 2024

ELEV 26	<b>D</b>	TDZE 22
HIRL Rwy 1L-19R REIL Rwy 1L and 32R MIRL Rwy 14L-32R		



CATEGORY	A	B	C	D
S-19R*	440-3/4	418 (500-3/4)	440-1	418 (500-1)
S-19R	780-3/4 758 (800-3/4)	780-1 758 (800-1)	780-1 1/8	758 (800-1 1/8)
<b>C</b> CIRCLING	780-1 754 (800-1)	780-1 1/4 754 (800-1 1/4)	960-2 3/4 934 (1000-2 3/4)	1300-3 1274 (1300-3)