

TAKEOFF OBSTACLE NOTES

Rwy 21: Sign 10' from DER, 330' left of centerline, 5' AGL/ 6536' MSL.

Tree 282' from DER, 481' right of centerline, 6543' MSL.

Ground 440' from DER, 615' left of centerline, 6545' MSL.

Tree 1024' from DER, 711' right of centerline, 6568' MSL.

Ground 1081' from DER, 768' left of centerline, 6571' MSL.

Tree 1285' from DER, 835' right of centerline, 6575' MSL.

Tree 1691' from DER, 917' left of centerline, 6610' MSL.

Tree 1803' from DER, 929' left of centerline, 6621' MSL.

Trees beginning 1943' from DER, 835' left of centerline, up to 6632' MSL.

Tree 1960' from DER, 993' right of centerline, 6601' MSL.

Tree, pole beginning 2060' from DER, 912' right of centerline, up to 6615' MSL.

Trees beginning 2144' from DER, 814' left of centerline, up to 6633' MSL.

Trees beginning 2396' from DER, 940' right of centerline, up to 6618' MSL.

Trees beginning 2467' from DER, 830' left of centerline, up to 6635' MSL.

Trees beginning 2623' from DER, 573' right of centerline, up to 6635' MSL.

Trees beginning 2722' from DER, 868' left of centerline, up to 6642' MSL.

Trees beginning 2840' from DER, 829' left of centerline, up to 6650' MSL.

Trees beginning 2920' from DER, 523' right of centerline, up to 6642' MSL.

Trees beginning 2972' from DER, 637' left of centerline, up to 6665' MSL.

Trees beginning 3169' from DER, 840' right of centerline, up to 6646' MSL.

Trees beginning 3263' from DER, 1010' right of centerline, up to 6651' MSL.

Tree 3500' from DER, 1210' left of centerline, 6673' MSL.

Trees beginning 3517' from DER, 800' left of centerline, up to 6678' MSL.

Trees beginning 3659' from DER, 914' left of centerline, up to 6688' MSL.

Tree 3996' from DER, 1340' right of centerline, 6653' MSL.

Trees beginning 4028' from DER, 1481' right of centerline, up to 6657' MSL.

Trees beginning 4099' from DER, 965' left of centerline, up to 6690' MSL.

Trees beginning 4171' from DER, 937' left of centerline, up to 6693' MSL.

Trees beginning 5379' from DER, 1002' left of centerline, up to 6687' MSL.

ATIS	124.3
GND CON	121.9
CANYON TOWER*	119.0
ALBUQUERQUE CENTER	128.45 298.9
LOS ANGELES CENTER	124.85 319.2
UNICOM	122.95

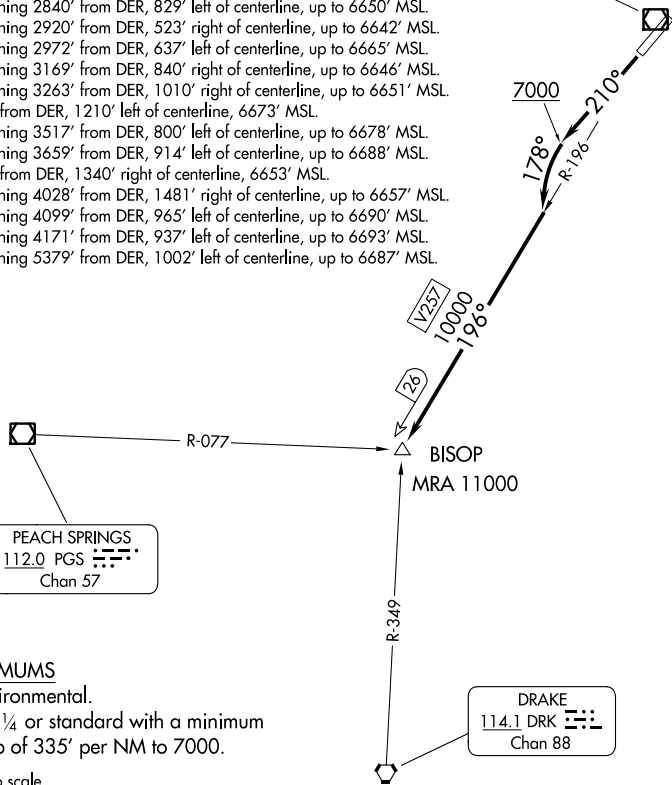
GRAND CANYON
111.65 GCN
Chan 53(Y)

PEACH SPRINGS
112.0 PGS
Chan 57

DRAKE
114.1 DRK
Chan 88

SW-4, 16 MAY 2024 to 13 JUN 2024

SW-4, 16 MAY 2024 to 13 JUN 2024



TAKEOFF MINIMUMS

Rwy 3: NA-Environmental.

Rwy 21: 200-1¼ or standard with a minimum climb of 335' per NM to 7000.

NOTE: Chart not to scale.

DEPARTURE ROUTE DESCRIPTION

TAKEOFF RUNWAY 21: Climb heading 210° to 7000, then turn left heading 178° to intercept GCN VOR/DME R-196 to BISOP INT. Expect filed altitude 10 minutes after departure.