

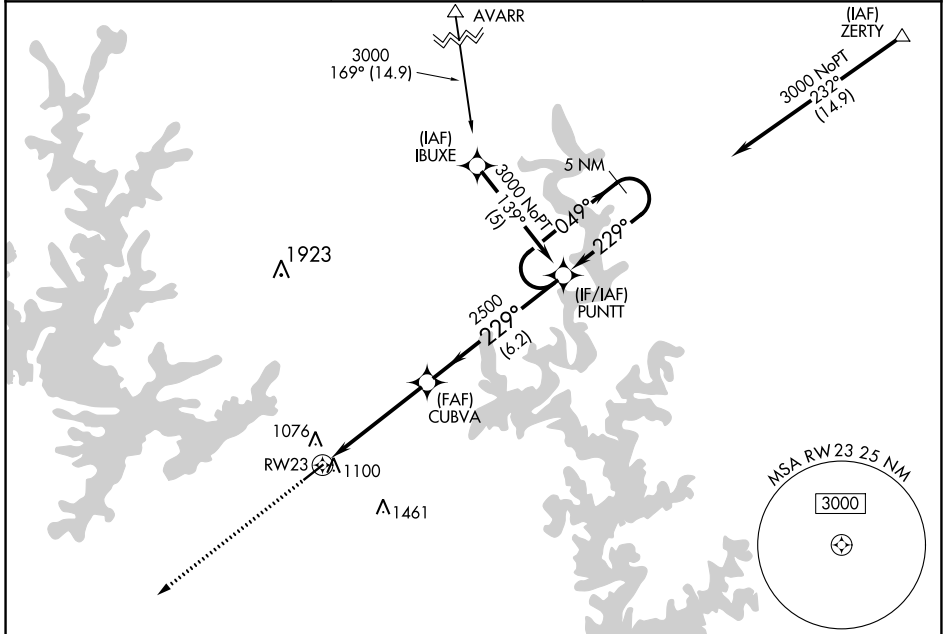
APP CRS	Rwy Idg	<b>5000</b>
<b>229°</b>	TDZE	<b>919</b>
	Apt Elev	<b>928</b>

# RNAV (GPS) RWY 23

BAXTER COUNTY (BPK)

RNP APCH.   
 ⚠ Rwy 23 helicopter visibility reduction below 1 SM NA. When local altimeter setting not received, use Flippin altimeter setting and increase all MDAs 60 feet. Circling NA for Cat C, southeast of Rwy 5-23. Straight-in Rwy 23 NA at night, Circling Rwy 23 NA at night.   
 MISSED APPROACH: Climb to 3100 direct COYAB and hold.

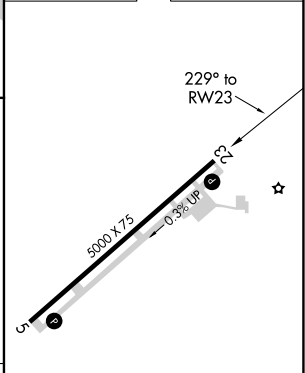
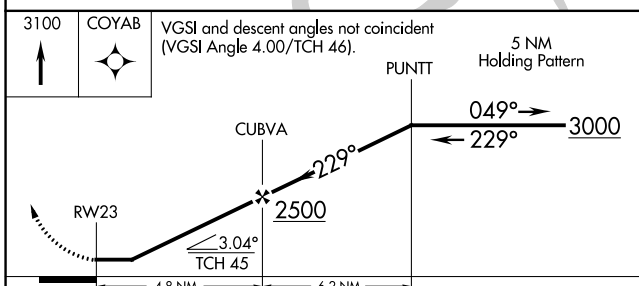
ASOS <b>133.975</b>	MEMPHIS CENTER <b>126.85 281.55</b>	UNICOM <b>123.0 (CTAF) 0</b>
------------------------	--	---------------------------------



SC-1, 16 MAY 2024 to 13 JUN 2024

SC-1, 16 MAY 2024 to 13 JUN 2024

ELEV 928	TDZE 919
----------	----------



CATEGORY	A	B	C	D
LNVA MDA	1360-1	441 (500-1)	1360-1 $\frac{3}{8}$ 441 (500-1 $\frac{3}{8}$ )	NA
CIRCLING	1400-1	472 (500-1)	1420-1 $\frac{1}{2}$ 492 (500-1 $\frac{1}{2}$ )	NA

REIL Rwy 5 and 23 0  
 MRL Rwy 5-23 0