

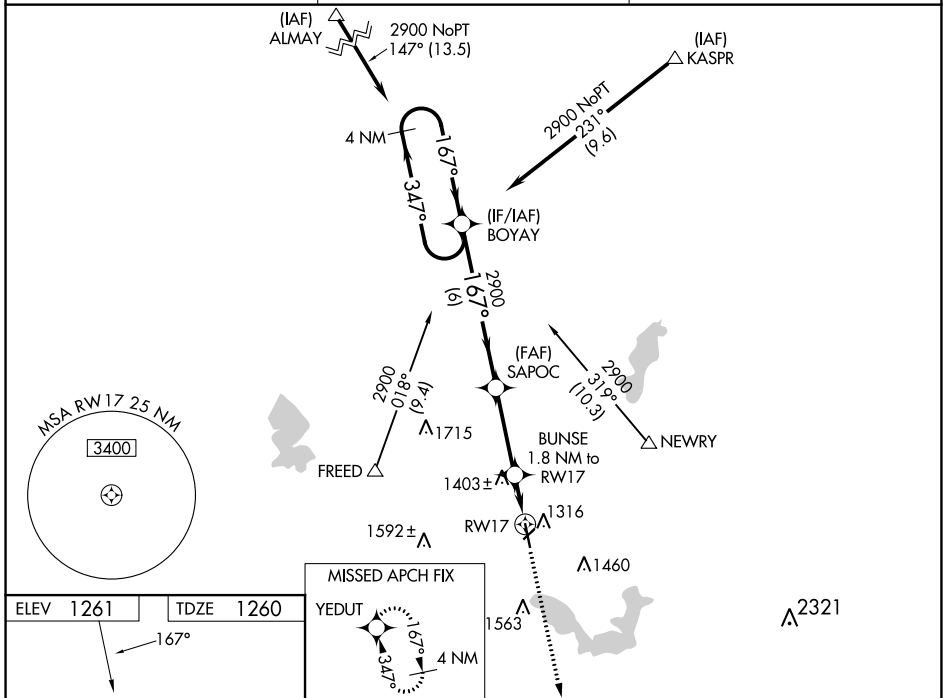
WAAS CH 49204 W17A	APP CRS 167°	Rwy Idg TDZE Apt Elev	5000 1260 1261
--	------------------------	-----------------------------	---

RNAV (GPS) RWY 17

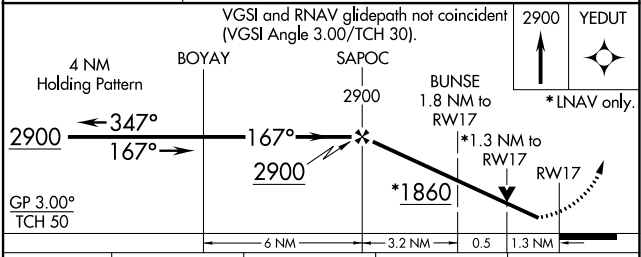
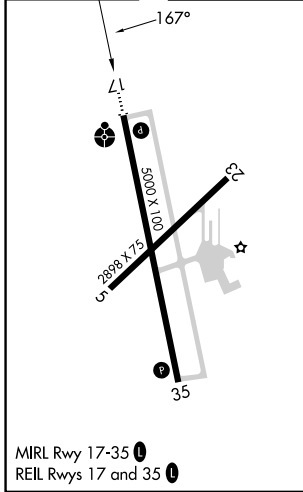
ALBERT LEA MUNI (AEL)

RNP APCH.	ODALS	MISSED APPROACH: Climb to 2900 direct YEDUT and hold.
<p>▼ Baro-VNAV NA when using Austin altimeter setting. For uncompensated Baro-VNAV systems, LNAV/VNAV NA below -28°C or above 36°C. Rwy 17 helicopter visibility reduction below 3/4 SM NA. VDP NA with Austin altimeter setting. When local altimeter setting not received, use Austin altimeter setting and increase all DA 48 feet and all MDA 60 feet; increase LPV and LNAV/VNAV visibility 1/4 mile all Cats, and LNAV Cat C/D visibility 1/8 mile.</p>		

AWOS-3PT 119.575	ROCHESTER APP CON* 119.8 251.125	UNICOM 123.0 (CTAF) 0
----------------------------	--	---------------------------------



ELEV 1261	TDZE 1260
-----------	-----------



CATEGORY	A	B	C	D
LPV DA		1510-3/4	250 (300-3/4)	
LNAV/VNAV DA		1510-3/4	250 (300-3/4)	
LNAV MDA	1700-1	440 (500-1)	1700-1 1/4	440 (500-1 1/4)

NC-1, 16 MAY 2024 to 13 JUN 2024

NC-1, 16 MAY 2024 to 13 JUN 2024