

WAAS CH 53625 W35A	APP CRS 347°	Rwy Idg 5000 TDZE 1261 Apt Elev 1261
--	------------------------	---

RNAV (GPS) RWY 35

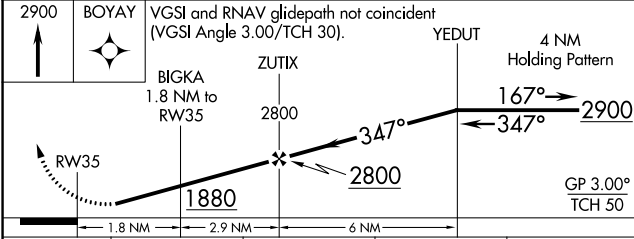
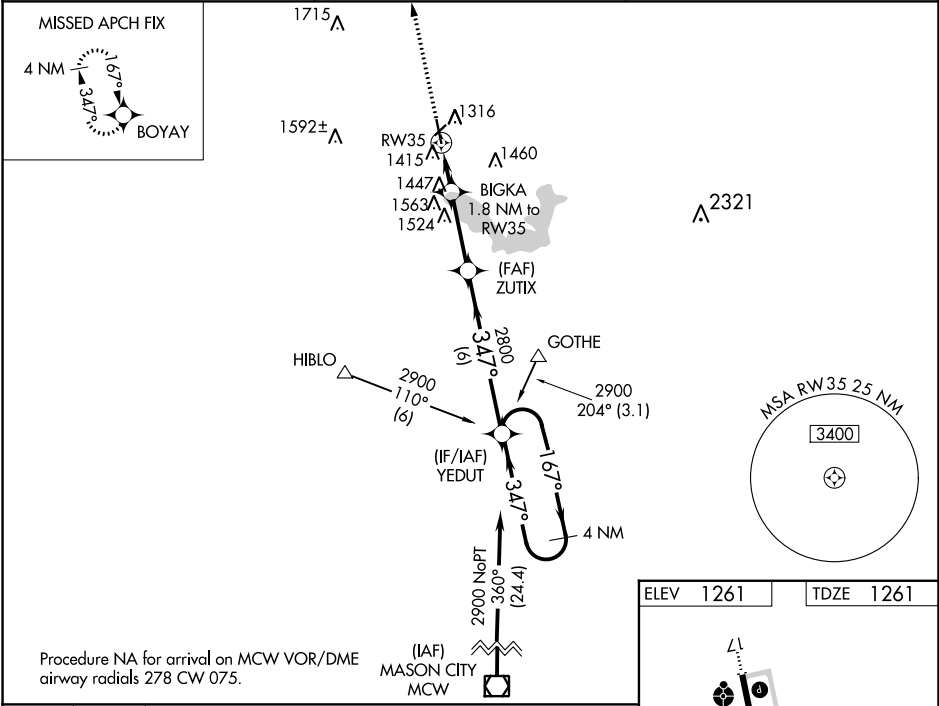
ALBERT LEA MUNI (A.E.L.)

RNP APCH-GPS.

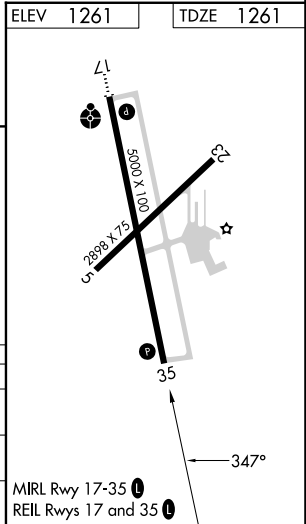
⚠ Baro-VNAV NA when using Austin altimeter setting. For uncompensated Baro-VNAV systems, LNAV/VNAV NA below -28°C or above 36°C. Rwy 35 helicopter visibility reduction below 3/4 SM NA. When local altimeter setting not received, use Austin altimeter setting: increase LPV DA to 1559 feet and LNAV/VNAV DA to 1624 feet; increase all MDAs 60 feet.

MISSED APPROACH: Climb to 2900 direct BOYAY and hold.

AWOS-3PT 119.575	ROCHESTER APP CON * 119.8 251.125	UNICOM 123.0 (CTAF)
----------------------------	---	-------------------------------



CATEGORY	A	B	C	D
LPV DA		1511-1	250 (300-1)	
LNAV/VNAV DA		1576-1	315 (400-1)	
LNAV MDA	1720-1 459 (500-1)		1720-1 3/8 459 (500-1 3/8)	



NC-1, 16 MAY 2024 to 13 JUN 2024

NC-1, 16 MAY 2024 to 13 JUN 2024