

(LCH5.LCH) 24137

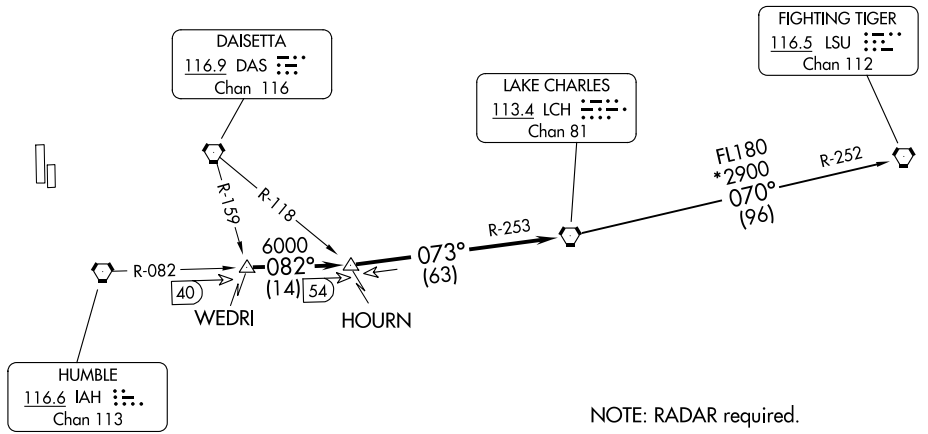
AL-5457 (FAA)

DAVID WAYNE HOOKS MEML (DWH)
HOUSTON, TEXAS

LAKE CHARLES FIVE DEPARTURE

ATIS
128.375
CLNC DEL
119.45
GND CON
121.8 239.0
HOOKS TOWER*
127.4 354.1 (EAST)
118.4 (CTAF) 354.1 (WEST)
HOUSTON DEP CON
119.7 281.4

**TOP ALTITUDE:
ASSIGNED BY ATC**



NOTE: RADAR required.

TAKEOFF MINIMUMS

Rwy 17L, 35R NA - Environmental.
Waterway 17, 35 NA - Air Traffic.
Rwy 17R, 35L Standard.

NOTE: Chart not to scale.



DEPARTURE ROUTE DESCRIPTION

When entering controlled airspace, climb on assigned heading for RADAR vectors to WEDRI INT. Maintain ATC assigned altitude. Expect filed altitude 10 minutes after departure, thence. . . .

. . . .on IAH R-082 to HOUN INT, then on LCH R-253 to LCH VORTAC.

FIGHTING TIGERS TRANSITION (LCH5.LSU): From over LCH VORTAC on LCH R-070 and LSU R-252 to LSU VORTAC.

LAKE CHARLES FIVE DEPARTURE
(LCH5.LCH) 22JUN17

HOUSTON, TEXAS
DAVID WAYNE HOOKS MEML (DWH)

SC-5, 16 MAY 2024 to 13 JUN 2024

SC-5, 16 MAY 2024 to 13 JUN 2024