

LOC/DME I-JYV 109.7 Chan 34	APP CRS 267°	Rwy Idg 9402 TDZE 95 Apt Elev 96
---	------------------------	---

ILS RWY 26L (SA CAT I)

GEORGE BUSH INTCNL/HOUSTON (IAH)

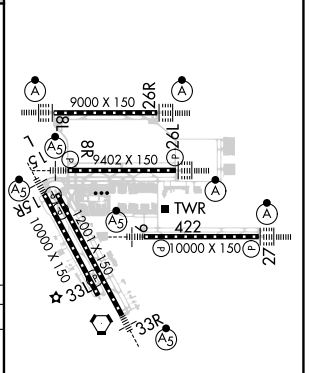
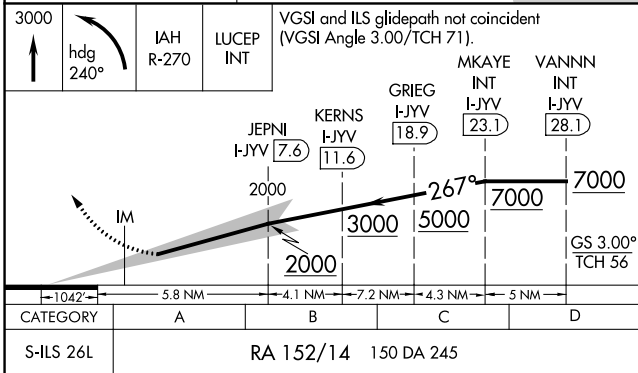
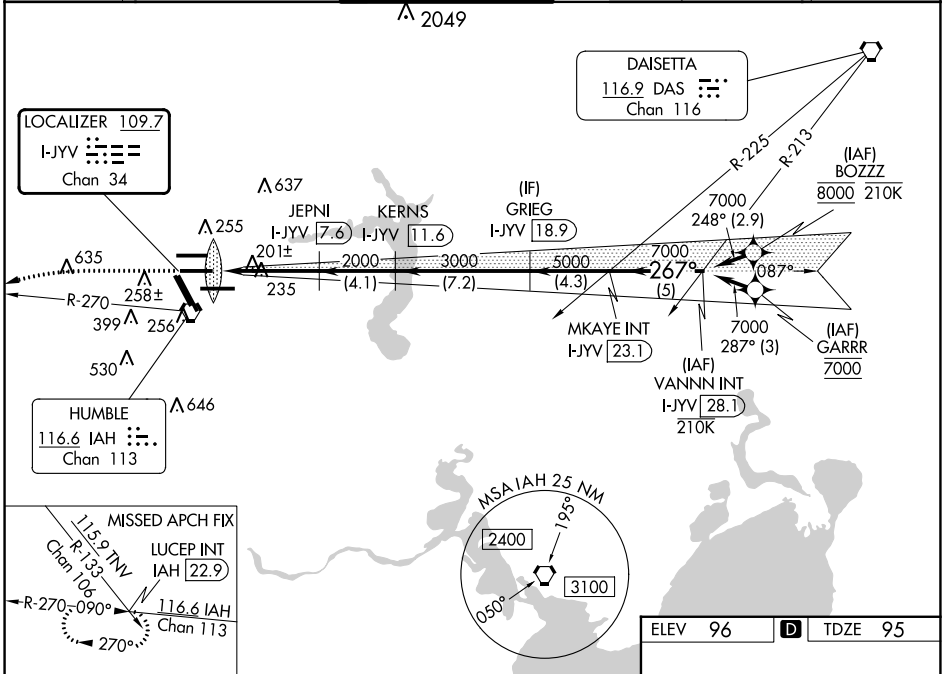
DME required. From BOZZZ, GARRR: RNAV 1-GPS required.

Simultaneous approach authorized with Rwy 26R and Rwy 27.
Requires specific OPSPEC, MSPEC, or LOA approval and use of HUD to DH.

ALSF-2

MISSED APPROACH: Climb to 3000 then left turn heading 240° and IAH VORTAC R-270 to LUCEP INT/IAH 22.9 DME and hold.

D-ATIS 124.05	HOUSTON APP CON 120.05 379.1 EAST 124.35 316.15 WEST	HOUSTON TOWER 125.35 290.2	GND CON 118.575	CLNC DEL 128.1	CPDLC
-------------------------	--	--------------------------------------	---------------------------	--------------------------	-------



SA CATEGORY I ILS - SPECIAL AIRCREW & AIRCRAFT CERTIFICATION REQUIRED

TDZ/CL Rwsy 8R, 8L, 15R, 26R, 26L, 27 and 33L
HIRL all Rwsy

SC-5, 16 MAY 2024 to 13 JUN 2024

SC-5, 16 MAY 2024 to 13 JUN 2024