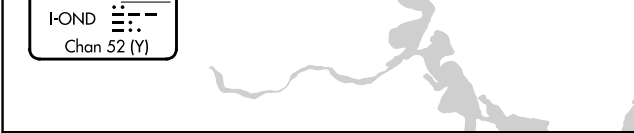
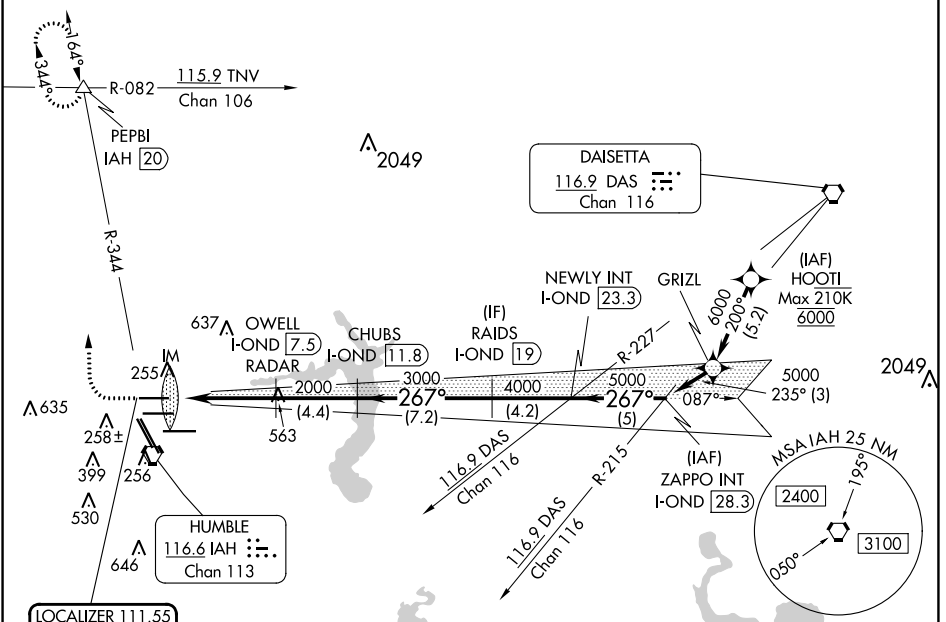


LOC/DME I-OND 111.55 Chan 52 (Y)	APP CRS 267°	Rwy Idg 9000 TDZE 95 Apt Elev 96
--	------------------------	---

ILS RWY 26R (CAT II & III)

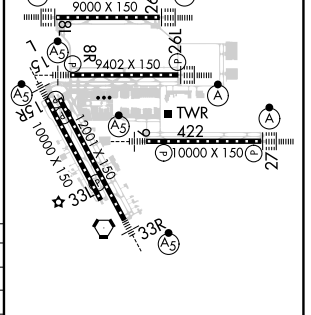
GEORGE BUSH INTCNL/HOUSTON (IAH)

DME required. From HOOI: RNAV 1-GPS required.			ALSF-2 	MISSED APPROACH: Climb to 600 then climbing right turn to 3000 on IAH VORTAC R-344 to PEPBI INT/ IAH 20 DME and hold.	
Simultaneous approach authorized with Rwy 26L and Rwy 27. Cat II: RVR 1000 authorized with specific OPSPEC, MSPEC or LOA approval and use of autoland or HUD to touchdown.					
D-ATIS 124.05	HOUSTON APP CON 120.05 379.1 EAST 124.35 316.15 WEST	HOUSTON TOWER 120.725 290.2	GND CON 118.575	CLNC DEL 128.1	CPDLC



ELEV 96	D TDZE 95
---------	------------------

600	3000	PEPBI	OWELL I-OND (7.5) RADAR	CHUBS I-OND (11.8)	RAIDS I-OND (19)	NEWLY INT I-OND (23.3)	ZAPPO INT I-OND (28.3)
↑	↻ IAH R-344	△	IM 2000	2000	3000	4000	5000
			195	2000	3000	4000	5000
			5.8 NM	4.4 NM	7.2 NM	4.2 NM	5 NM
CATEGORY	A		B		C		D
S-ILS-26R	CAT II RA 99/12 100 DA 195						
S-ILS-26R	CAT III RVR 06						



CATEGORY II & III ILS - SPECIAL AIRCREW & AIRCRAFT CERTIFICATION REQUIRED

TDZ/CL Rwy's 8R, 8L, 15R, 26R, 26L, 27 and 33L
HIRL all Rwy's

SC-5, 16 MAY 2024 to 13 JUN 2024

SC-5, 16 MAY 2024 to 13 JUN 2024