

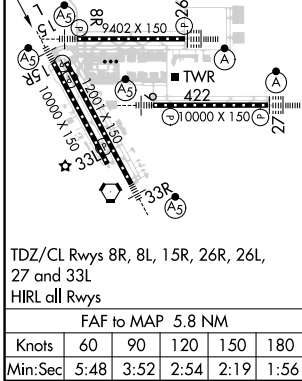
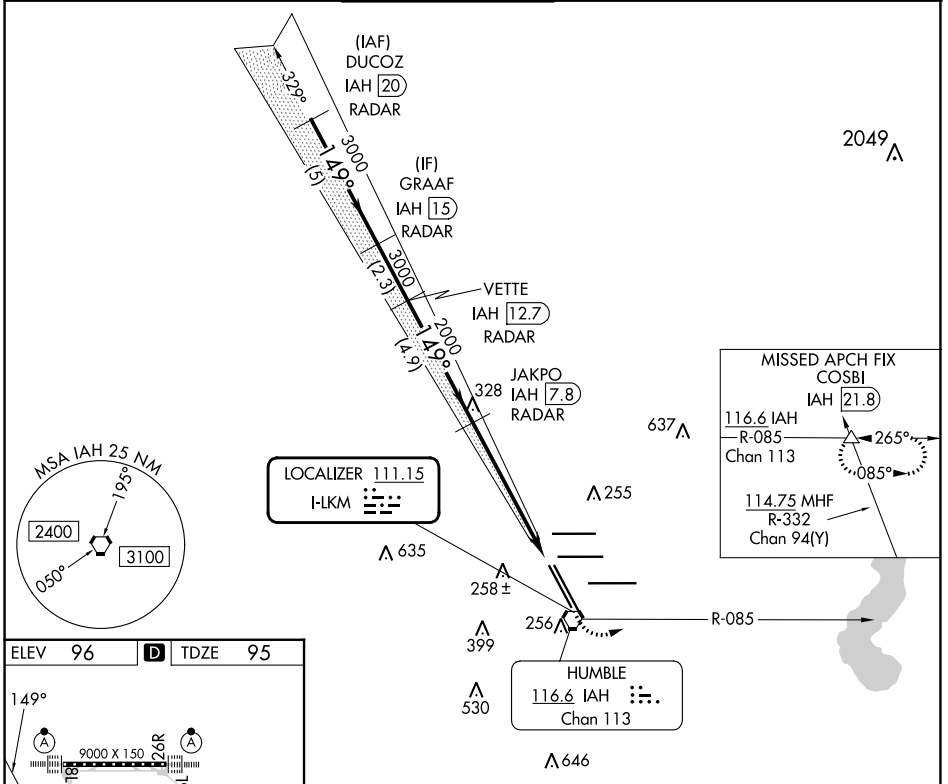
LOC I-LKM <b>111.15</b>	APP CRS <b>149°</b>	Rwy Idg <b>10000</b> TDZE <b>95</b> Apt Elev <b>96</b>
----------------------------	------------------------	--------------------------------------------------------------

# ILS or LOC RWY 15R

GEORGE BUSH INTCNL/HOUSTON (IAH)

RADAR required for procedure entry. DME or RADAR required.		MALSR	MISSED APPROACH: Climb to 1000 then climbing left turn to 2000 on IAH VORTAC R-085 to COSBI INT/IAH 21.8 DME and hold.
DME from IAH VORTAC. Simultaneous reception of I-LKM and IAH DME required. For inop ALS, increase S-LS 15R Cat E visibility to RVR 4000, and S-LOC 15R Cat C/D/E visibility to 1/2 SM.			

D-ATIS <b>124.05</b>	HOUSTON APP CON <b>120.05 379.1 EAST</b> <b>124.35 316.15 WEST</b>	HOUSTON TOWER <b>127.3 288.25</b>	GND CON <b>121.7</b>	CLNC DEL <b>128.1</b>	CPDLC
-------------------------	--------------------------------------------------------------------------	--------------------------------------	-------------------------	--------------------------	-------



ELEV 96		D	TDZE 95
VGSIs and ILS glidepath not coincident (VGSi Angle 3.00/TCH 71). DUCOZ IAH 20 RADAR, GRAAF IAH 15 RADAR, VETTE IAH 12.7 RADAR, JAKPO IAH 7.8 RADAR		1000 2000 IAH R-085 COSBI	
GS 3.00° TCH 54 3000 — 149° — 3000 — 149° — 2000 5 NM — 2.3 NM — 4.9 NM — 4.5 NM — 1.3		* IAH 3.3 IAH 2 * LOC only.	
CATEGORY	A	B	C
S-ILS 15R	295/18 200 (200-1/2)		
S-LOC 15R	580/24	485 (500-1/2)	580/50 485 (500-1)

SC-5, 16 MAY 2024 to 13 JUN 2024

SC-5, 16 MAY 2024 to 13 JUN 2024