

LOC/DME I-JYV 109.7 Chan 34	APP CRS 267°	Rwy Idg 9402 TDZE 95 Apt Elev 96
---	------------------------	---

ILS or LOC RWY 26L

GEORGE BUSH INTCNL/HOUSTON (IAH)

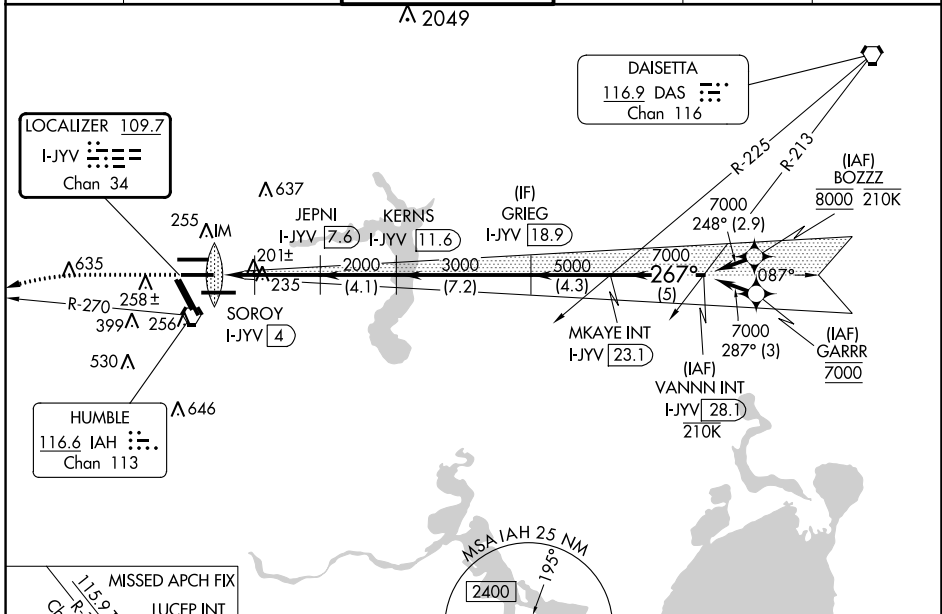
DME required. From BOZZZ, GARRR: RNAV 1-GPS required.

⚠ Simultaneous approach authorized with Rwy 26R and Rwy 27. For inop ALS, increase S-ILS 26L Cat E visibility to RVR 4000, S-LOC 26L Cat C/D/E visibility to RVR 5000.

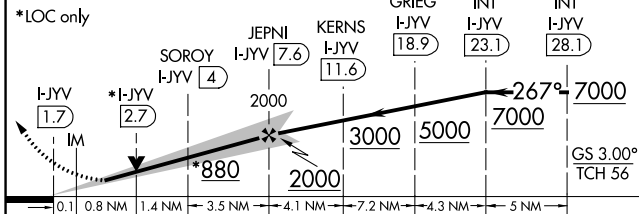
ALSF-2

MISSED APPROACH: Climb to 3000 then left turn heading 240° and IAH VORTAC R-270 to LUCEP INT/IAH 22.9 DME and hold.

D-ATIS 124.05	HOUSTON APP CON 120.05 379.1 EAST 124.35 316.15 WEST	HOUSTON TOWER 125.35 290.2	GND CON 118.575	CLNC DEL 128.1	CPDLC
-------------------------	--	--------------------------------------	---------------------------	--------------------------	-------

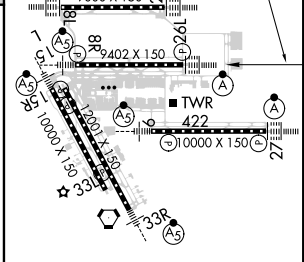


3000	hdg 240°	IAH R-270	LUCEP INT	VGSI and ILS glidepath not coincident (VGSI Angle 3.00/TCH 71).	MKAYE INT I-JYV (23.1)	VANNN INT I-JYV (28.1)
------	----------	-----------	-----------	---	------------------------	------------------------



CATEGORY	A	B	C	D	E
S-ILS 26L	295/18		200 (200-½)		
S-LOC 26L	460/24	365 (400-½)		460/35	365 (400-¾)

ELEV 96	D	TDZE 95
---------	---	---------



TDZ/CL Rwy 8R, 8L, 15R, 26R, 26L, 27 and 33L
HIRL all Rwys

FAF to MAP 5.8 NM					
Knots	60	90	120	150	180
Min:Sec	5:48	3:52	2:54	2:19	1:56

SC-5, 16 MAY 2024 to 13 JUN 2024

SC-5, 16 MAY 2024 to 13 JUN 2024