

LOC/DME I-IAH 109.7 Chan 34	APP CRS 087°	Rwy Idg 9402 TDZE 95 Apt Elev 96
---	------------------------	---


ILS or LOC RWY 8R

GEORGE BUSH INTCNL/HOUSTON (IAH)

RNAV 1-GPS or RADAR required for procedure entry, DME.

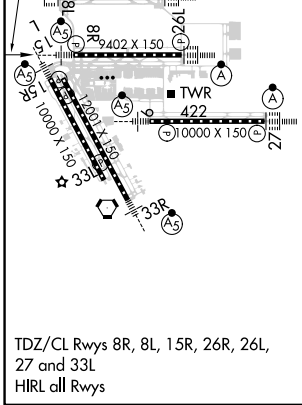
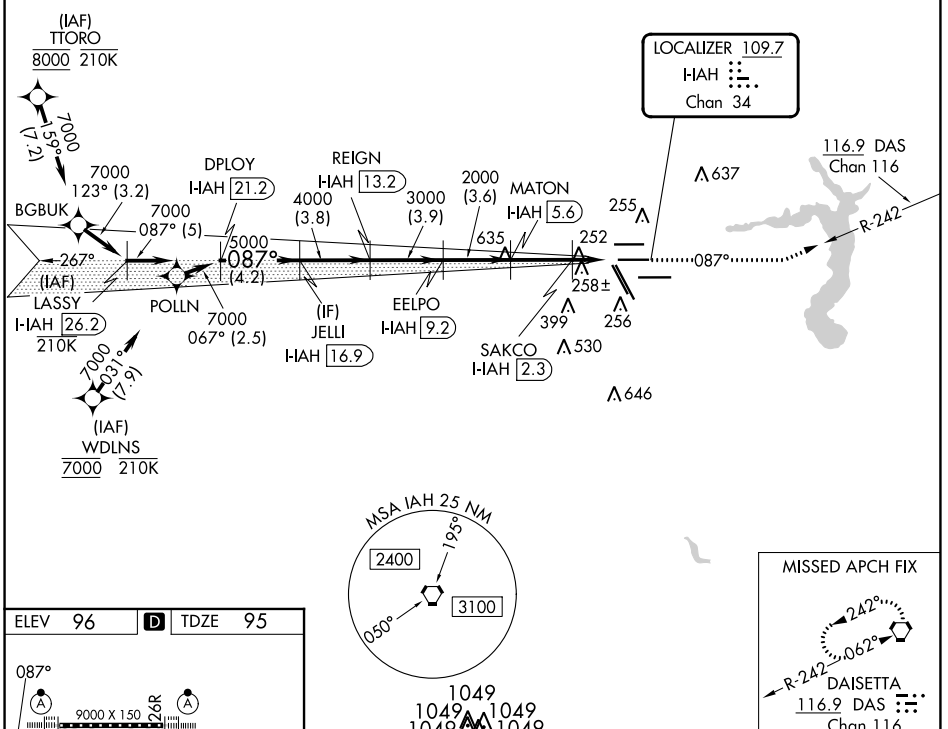
Simultaneous approach authorized. For inop ALS, increase S-LOC 8R Cat C/D/E visibility to 1 $\frac{1}{2}$ SM. For inop ALS, increase S-ILS 8R Cat E visibility to RVR 4000.

MALSR



MISSED APPROACH: Climb to 3000 on heading 087° and on DAS VORTAC R-242 to DAS VORTAC and hold.

D-ATIS 124.05	HOUSTON APP CON 120.05 379.1 EAST 124.35 316.15 WEST	HOUSTON TOWER 125.35 290.2	GND CON 118.575	CLNC DEL 128.1	CPDLC Δ 2049
-------------------------	--	--------------------------------------	---------------------------	--------------------------	------------------------



VGSI and ILS glidepath not coincident (VGSI Angle 3.00/TCH 72).

LASSY I-IAH 26.2	DPLDY I-IAH 21.2	JELLI I-IAH 16.9	REIGN I-IAH 13.2	EELPO I-IAH 9.2	MATON I-IAH 5.6	SAKCO I-IAH 2.3	I-IAH DME ANTENNA 0.2
7000	5000	4000	3000	2000	2000	2000	2000
GS 3.00°	GS 3.00°	GS 3.00°	GS 3.00°	GS 3.00°	GS 3.00°	GS 3.00°	GS 3.00°
TCH 55	TCH 55	TCH 55	TCH 55	TCH 55	TCH 55	TCH 55	TCH 55
-5 NM	-4.2 NM	-3.8	-3.9	-3.6	-3.3 NM	-1.3 NM	1.2 NM
CATEGORY	A	B	C	D	E		
S-ILS 8R	295/18			200 (200- $\frac{1}{2}$)			
S-LOC 8R	560/24	465 (500- $\frac{1}{2}$)		560/50	465 (500-1)		

*LOC only.

SC-5, 16 MAY 2024 to 13 JUN 2024

SC-5, 16 MAY 2024 to 13 JUN 2024